

# IDP in the DRC

Abraham Hirwa, Brian Preiss, and Francine M-Rajaniemi

INSTRUCTORS: Courtney Kurlanska, and Mohamad Farzinmoghadan

## Abstract

We will be creating a house that is considered temporary, but also have the ability to be made permanent if the families choose. We are also relocating them to the town of Gemena in the western portion of the Democratic Republic of Congo.

## Background

Civil wars and terrorist activities in the Eastern portion of the Democratic Republic of Congo have made it impossible to live there safely. Over several years, the Eastern part of Democratic Republic of Congo has been affected by many rebel groups from both inside the country and other regional rebel groups from neighboring countries.

We are relocating the people to Gemena to get them away from the fighting. Moving them to the city will also expose them to educational and economic benefits that will help them to restart their lives.

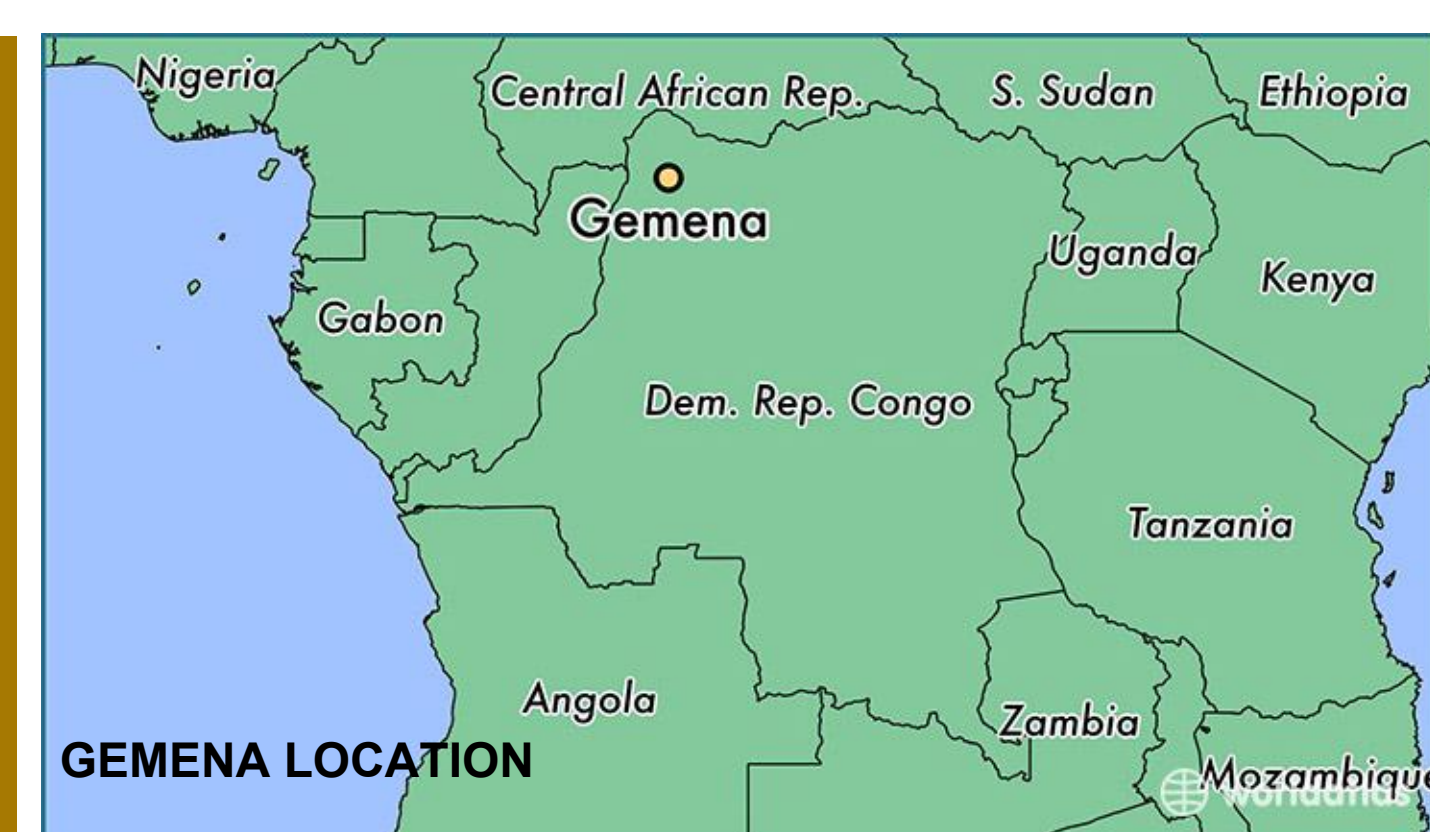
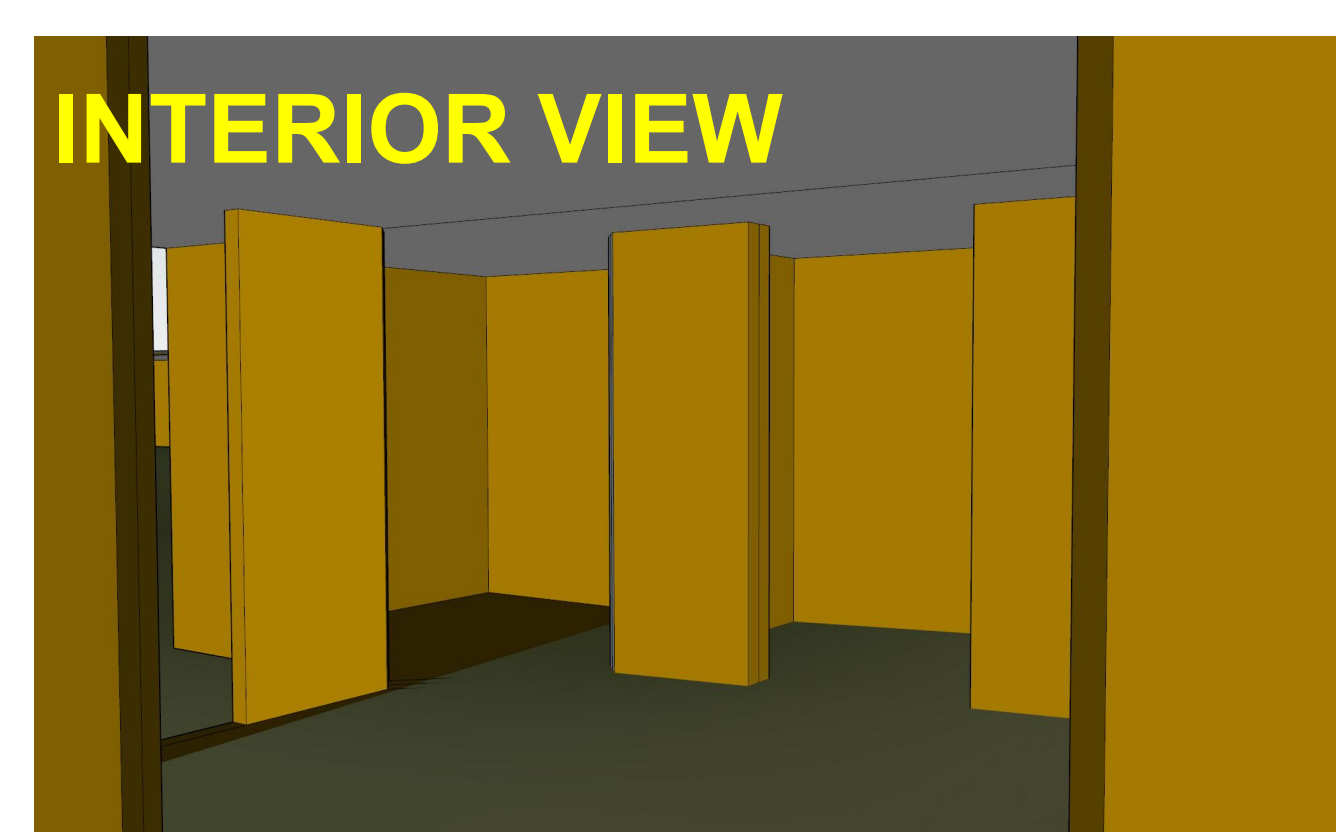
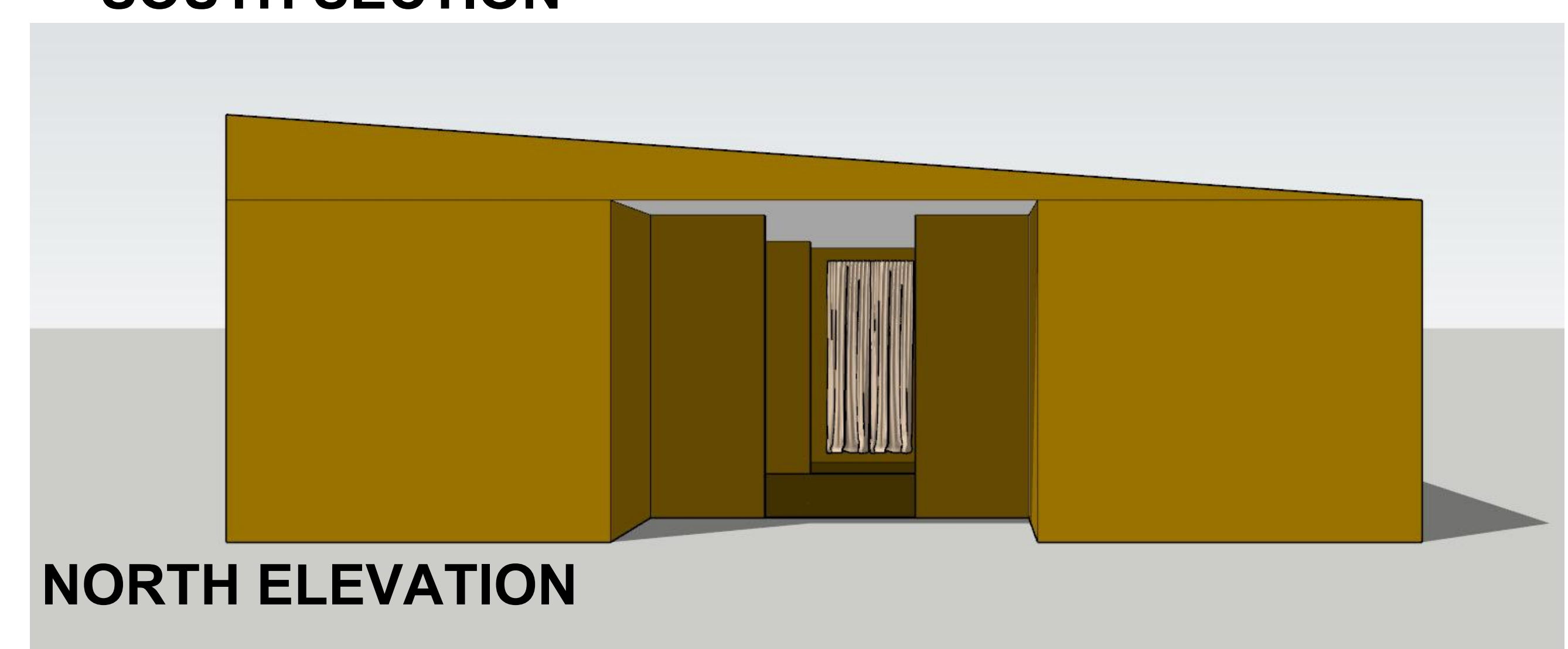
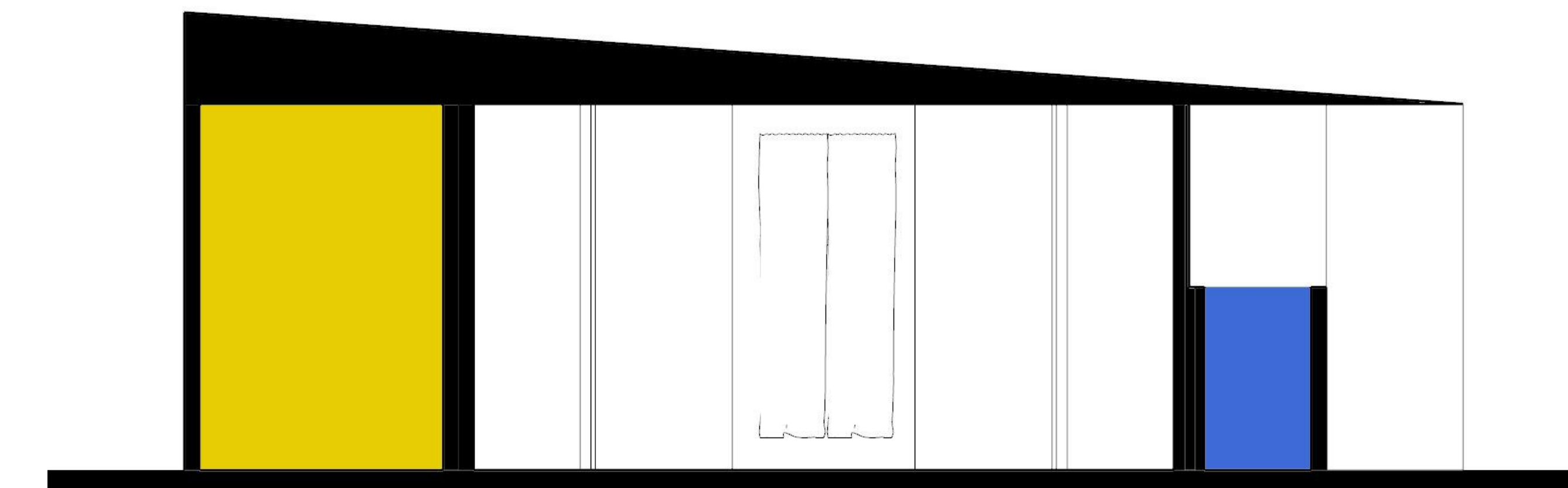
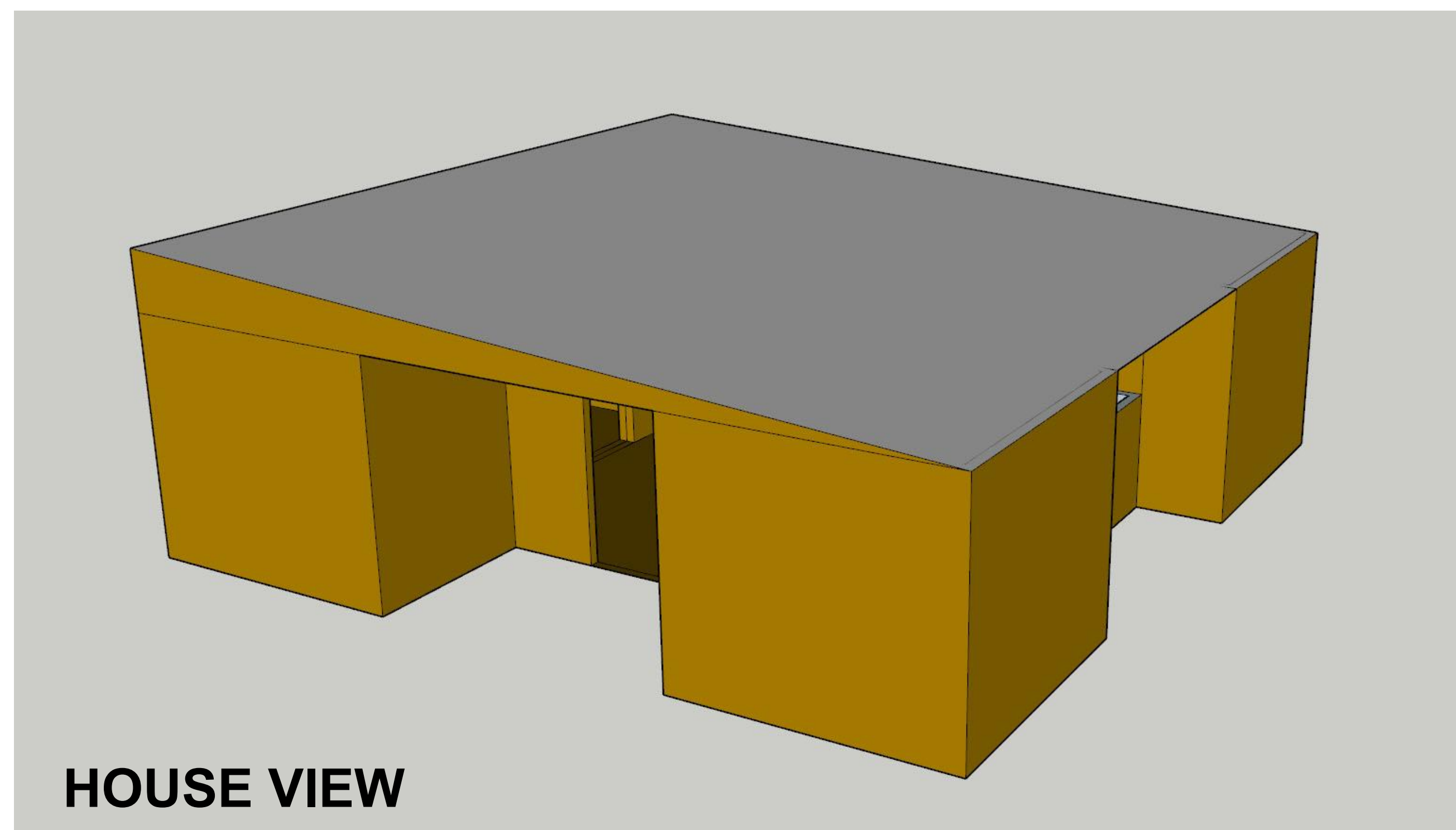
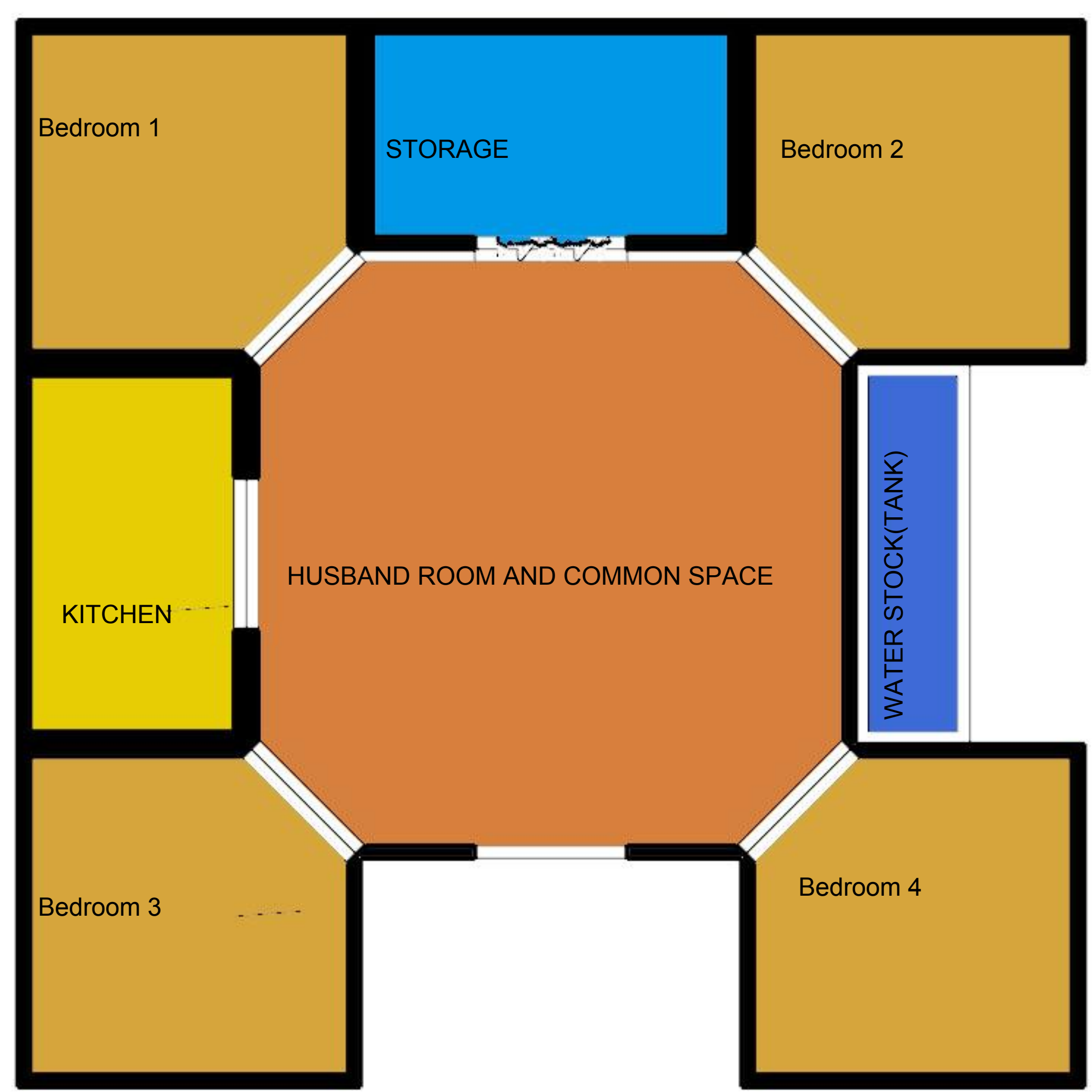


## References

DR Congo. (n.d.). Retrieved September 29, 2017, from Our Africa website: <http://www.our-africa.org/democratic-republic-of-congo>  
 DR Congo country profile. (2017, July 13). Retrieved September 28, 2017, from <http://www.bbc.com/news/world-africa-13283212>  
 History of the Conflict. (n.d.). Retrieved September 28, 2017, from Eastern Congo Initiative website: <http://www.easterncongo.org/about-drc/history-of-the-conflic>

## Concept

- Temporary shelter that can easily be made permanent
- Made from a stick frame and woven grass to cover the frame and corrugated tin roof
- Separate rooms for each wife and her children
- Water collection tank and filtration system for clean drinking water
- Mosquito nets to keep insects out of the home
- Shelters include a kitchen and a storage room
- Shelters will be placed in a rectangle to create open common space and create a community feeling



## Local Housing study

Traditionally homes in the Democratic Republic of Congo are compounds comprised of multiple huts and, each hut has a different purpose. In keeping with tradition we tried to design a more compact version of the traditional homes. To do this we created a room for each hut in the traditional homes. We are also using similar construction methods to make it easy for the people to construct their shelters.

