

An Analysis of the Get Green Program and the Sustainability Efforts of the Centro Cultural Costarricense-Norteamericano

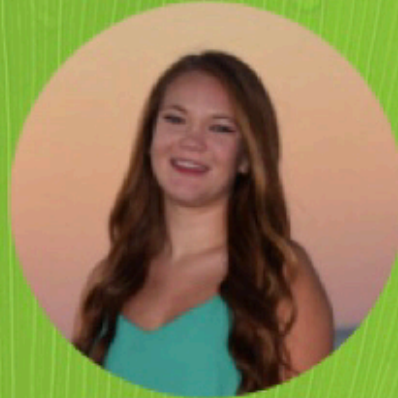
Presented By: Cameron Henchy, Carina Kennedy, Monét Norales and Timothy Ryan



The Team



Cameron Henchy
Aerospace Engineering
chenchy@wpi.edu



Carina Kennedy
Actuarial Mathematics
cmkennedy@wpi.edu



Monet Norales
Bioinformatics &
Computational Biology
mnorales@wpi.edu



Timothy Ryan
Mechanical Engineering
trryan@wpi.edu

Acknowledgements

¡Muchas Gracias!

Special thank you to:

Sra. Lilly Sevilla

Sr. Carlos Cortés

Sra. Sonia Salas

Sra. Karen Estrada

All Survey and Interview Participants

Professor James Chiarelli and Professor Darko Volkov



About Us

WPI



Initial Observations

GetGreen!



Sticker Get Green!
Apagadores



Camiseta Get Green!



Interviews

- Total number of interviews: 8
- Daily activities of the departments
- Main source of waste
- Proper recycling habits
- What is known about the Get Green Campaign

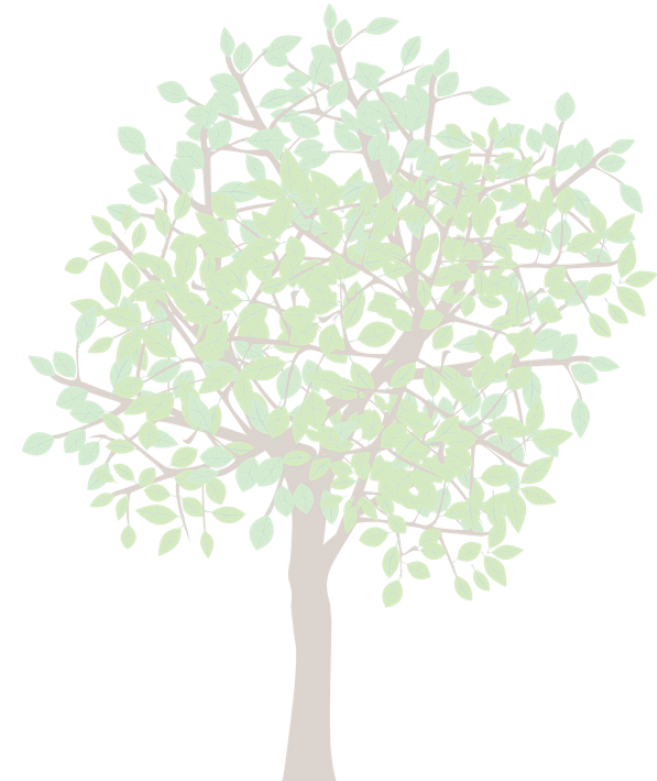


Interview Results

Interest



More Information



Surveys

Number of Students Surveyed: 3804

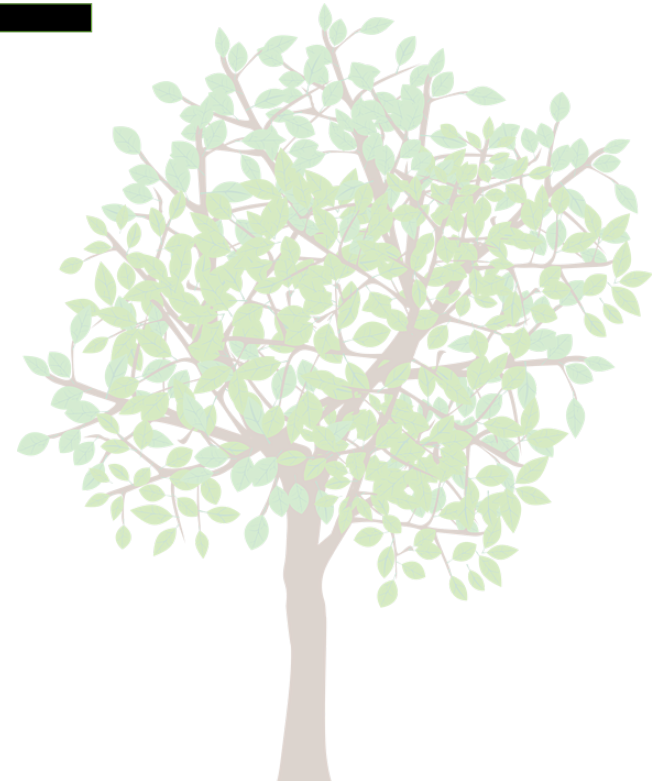
Number of Student Responses: 668

Student Response Rate: 18%

Number of Collaborators Surveyed: 210

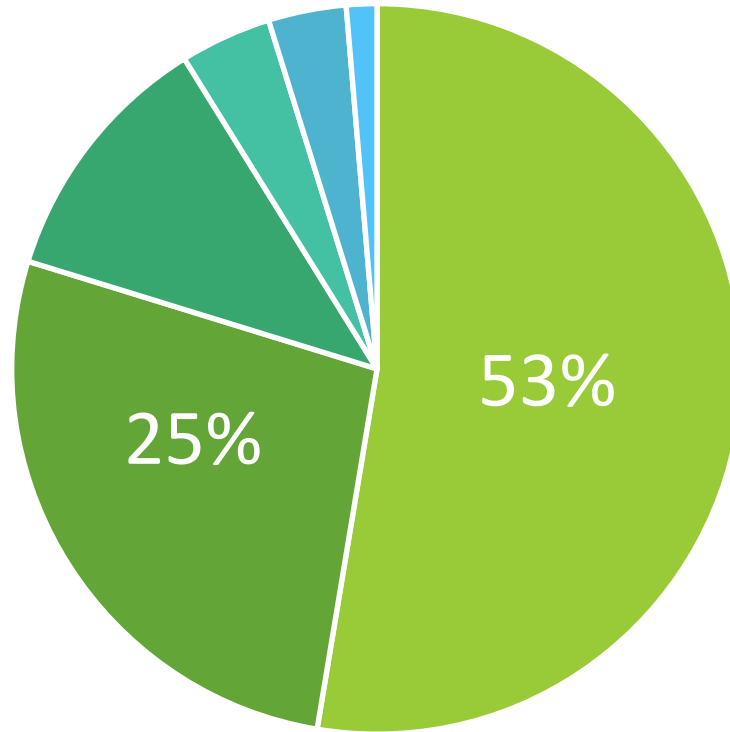
Number of Collaborator Responses: 81

Collaborator Response Rate: 39%

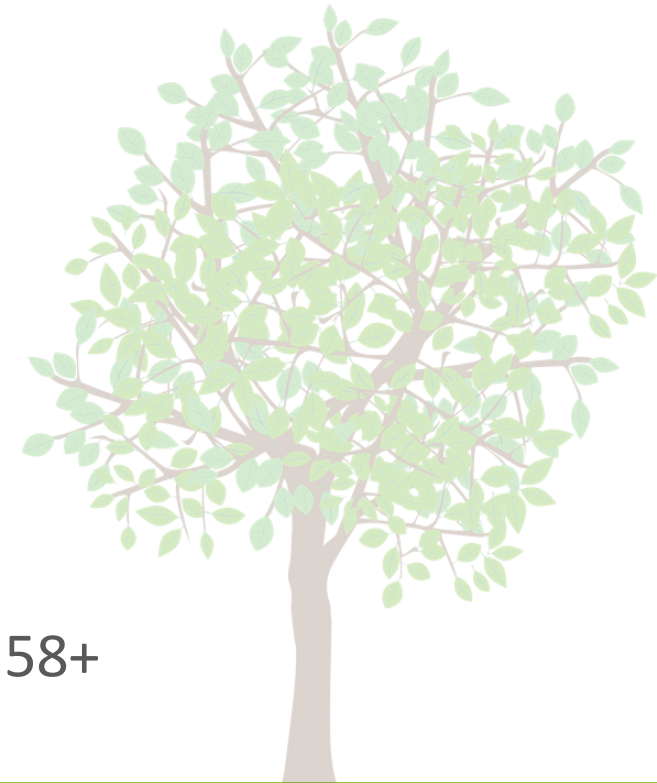


Student Survey Results

¿Cuál es tu edad?

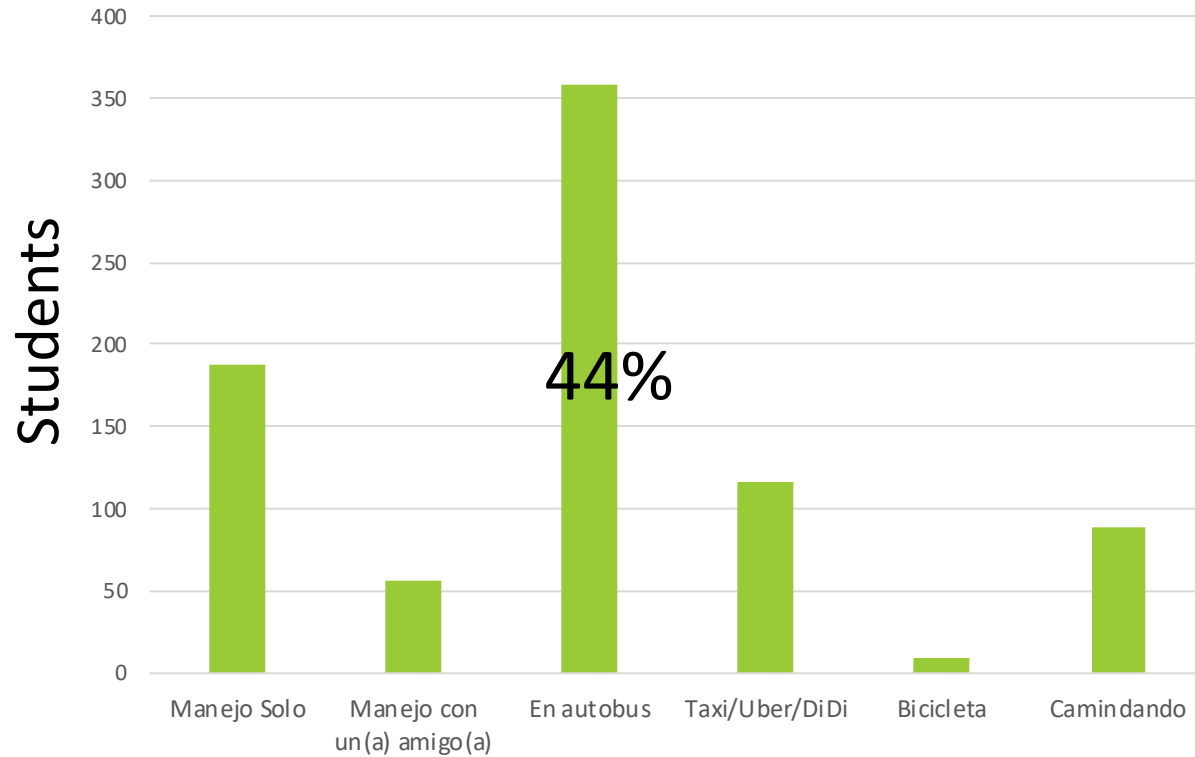


■ 18-25 ■ 26-33 ■ 34-41 ■ 42-49 ■ 50-57 ■ 58+

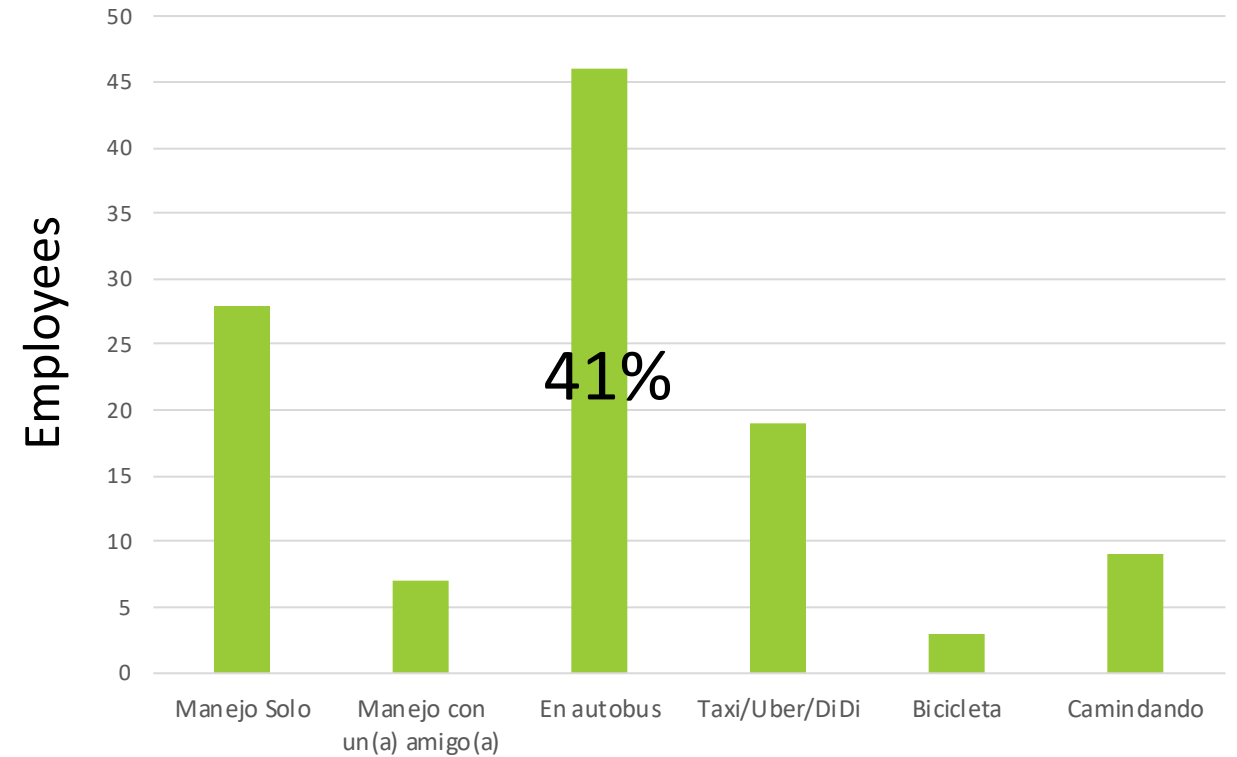


Survey Results

¿Cómo viajas de tu casa al CCCN?

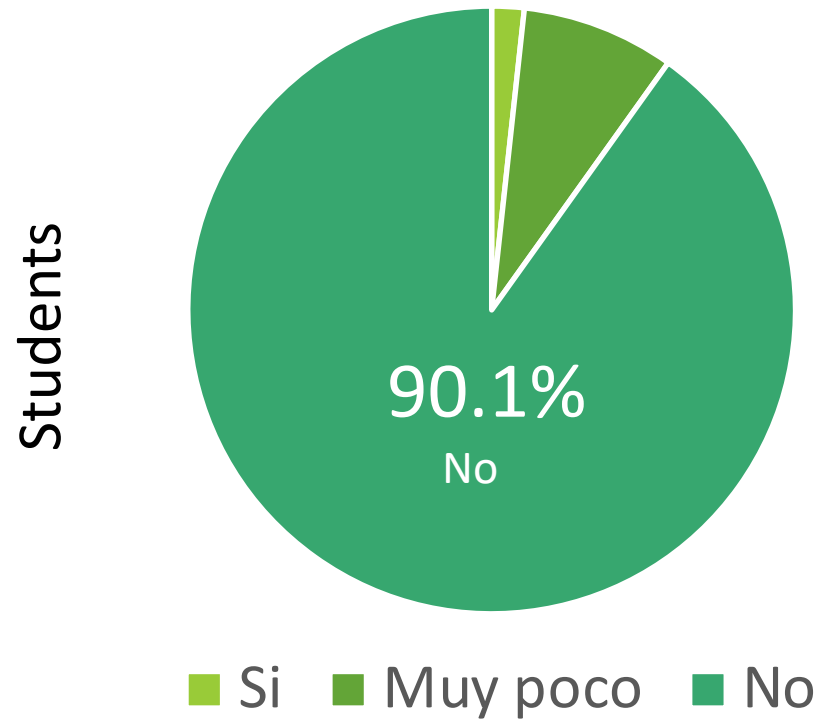


¿Cómo viajas de tu casa al CCCN?

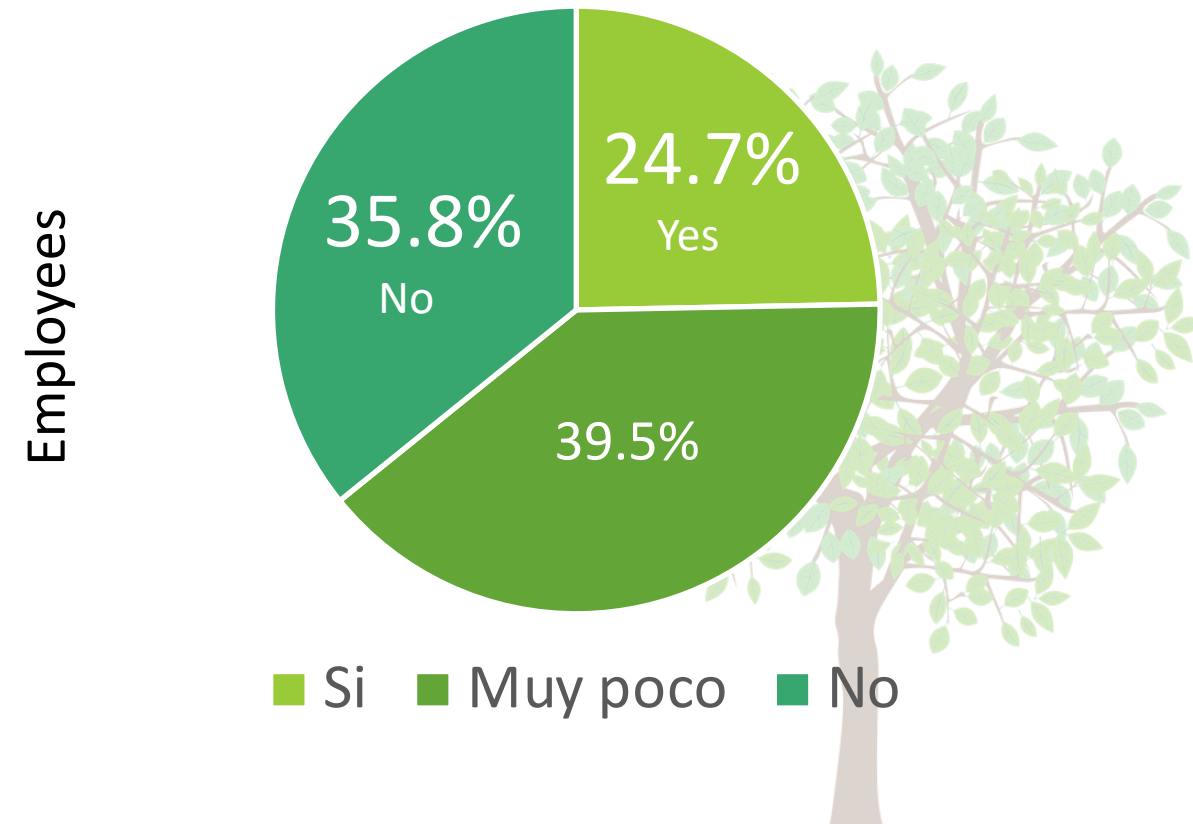


Survey Results

¿Conocés el programa del CCCN llamado “Get Green?”

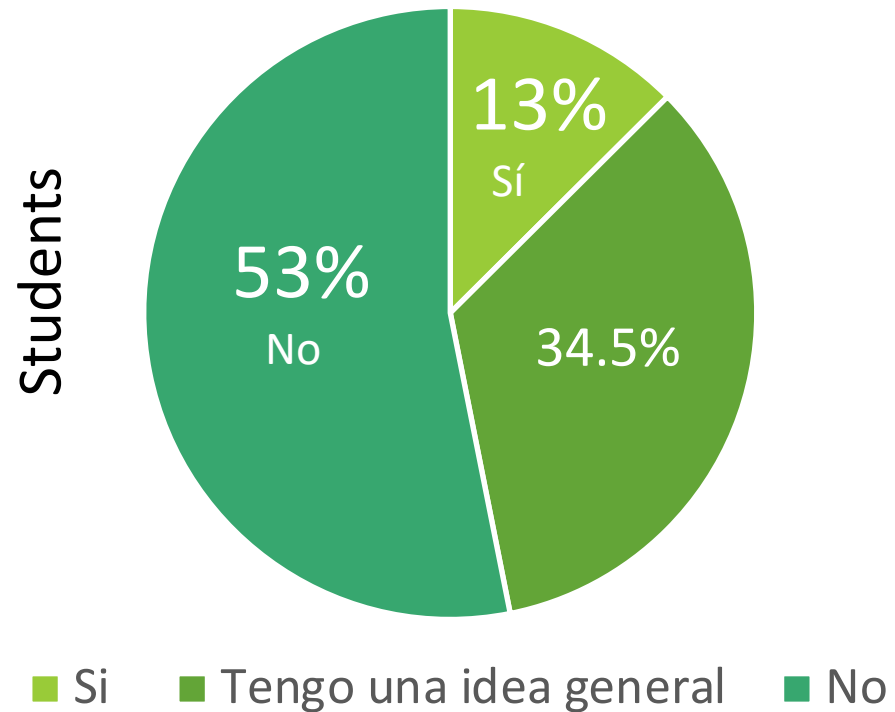


¿Conocés el programa del CCCN llamado “Get Green?”

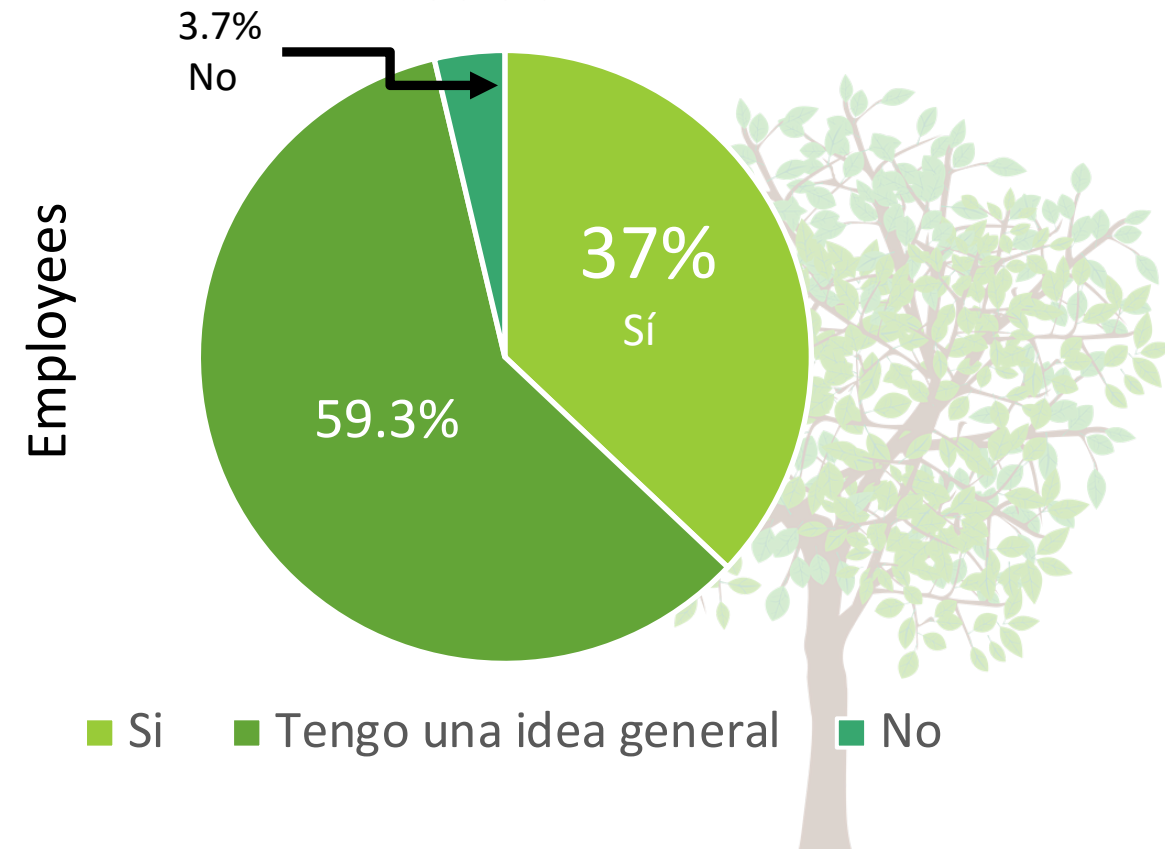


Survey Results

¿Conocés los lineamientos del CCCN sobre lo que se puede o no reciclar?



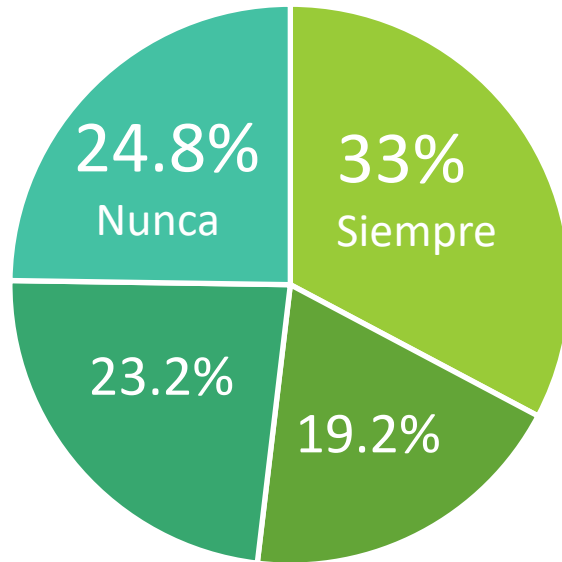
¿Conocés sobre lo que se puede o no reciclar?



Survey Results

¿Con qué frecuencia reciclás en el CCCN usando los recipientes para tales efectos?

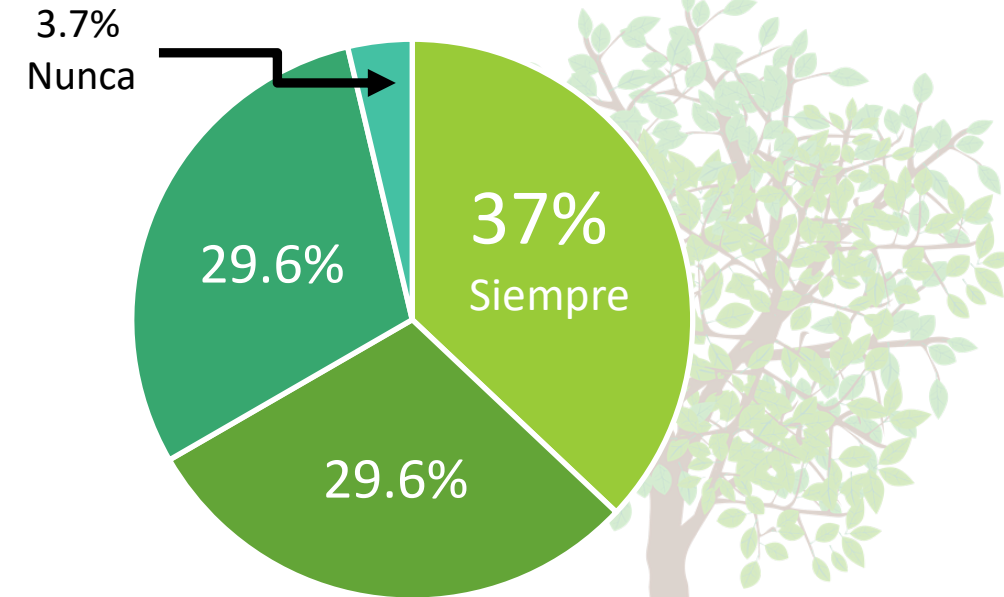
Students



■ Siempre ■ Casi siempre ■ De vez en cuando ■ Nunca

¿Con qué frecuencia reciclás en el CCCN usando los recipientes para tales efectos?

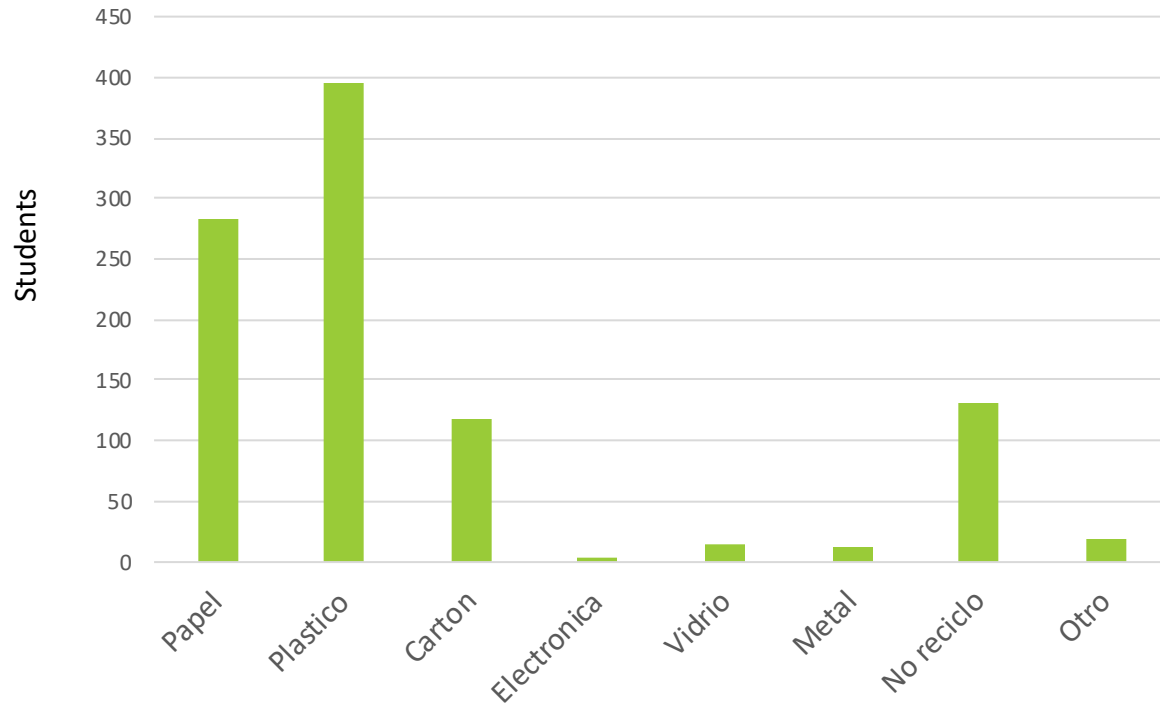
Employees



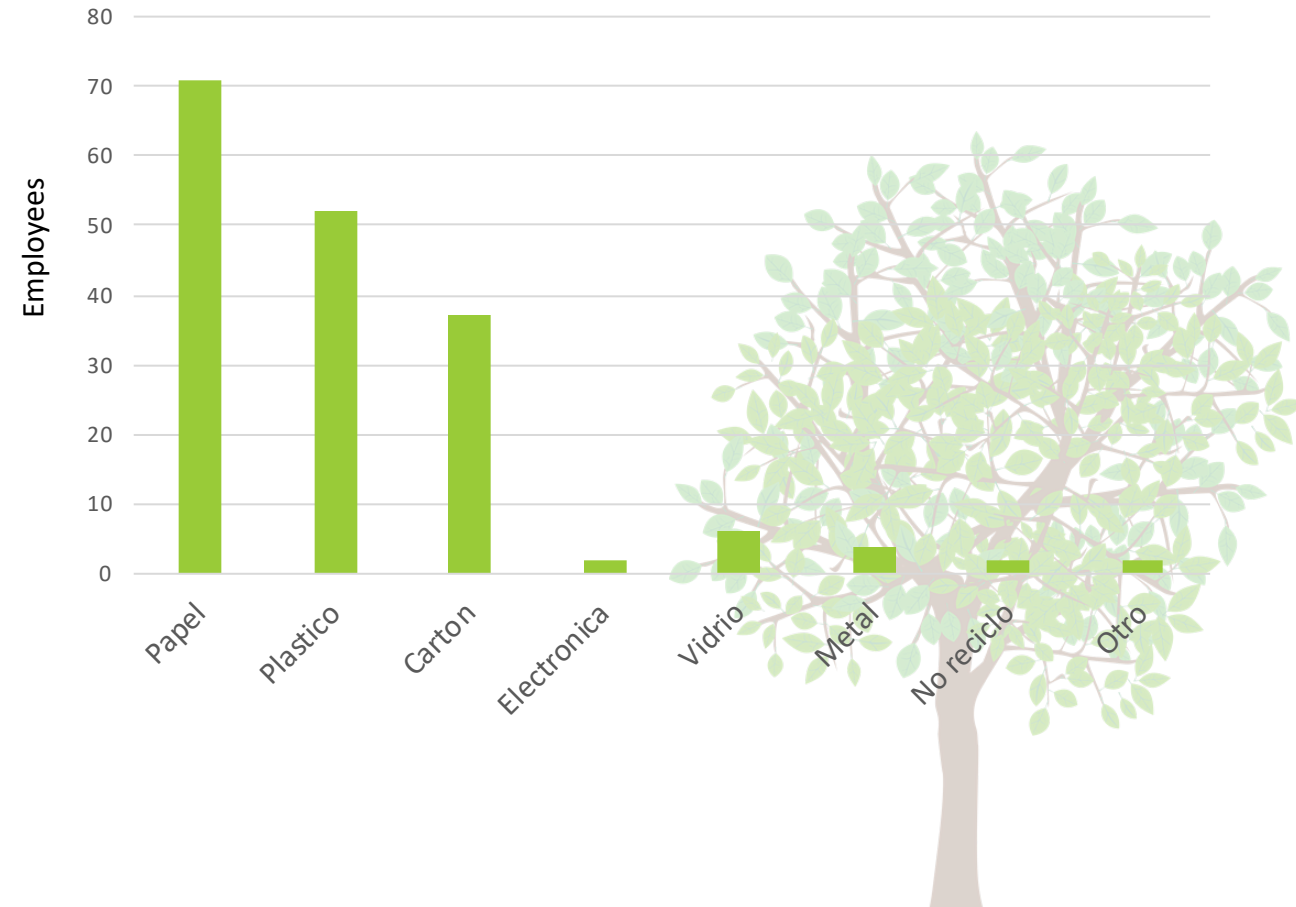
■ Siempre ■ Casi siempre ■ De vez en cuando ■ Nunca

Survey Results

¿Qué material reciclás más a menudo en el CCCN?

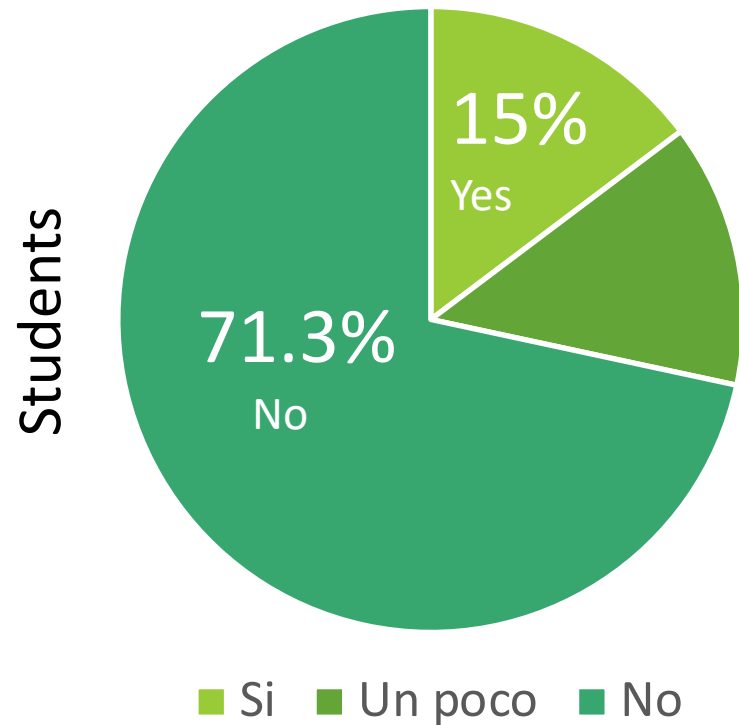


¿Qué material reciclás más a menudo en el CCCN?

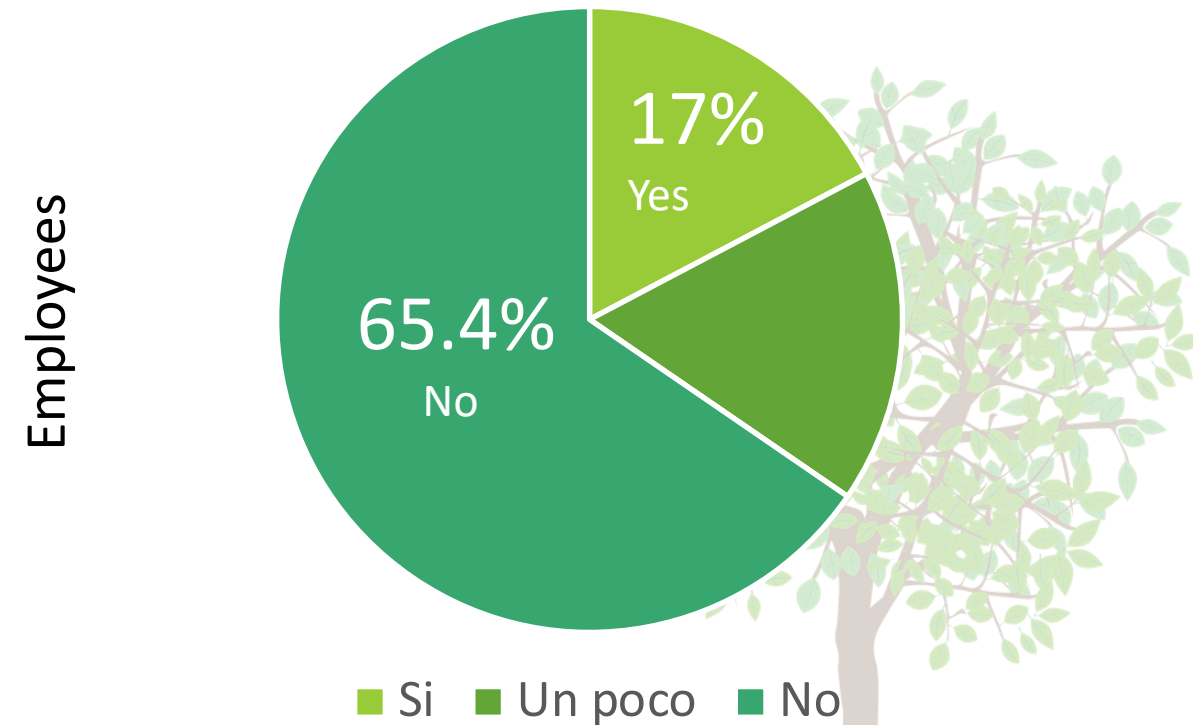


Survey Results

¿Sabés adónde se llevan la basura y el reciclaje después de botarlos?



¿Sabés adónde se llevan la basura y el reciclaje después de botarlos?



Student Survey Results

Dar más información acerca del reciclaje en la instalación.

Realizar charlas en clases donde nos enseñen como reciclar y los programas

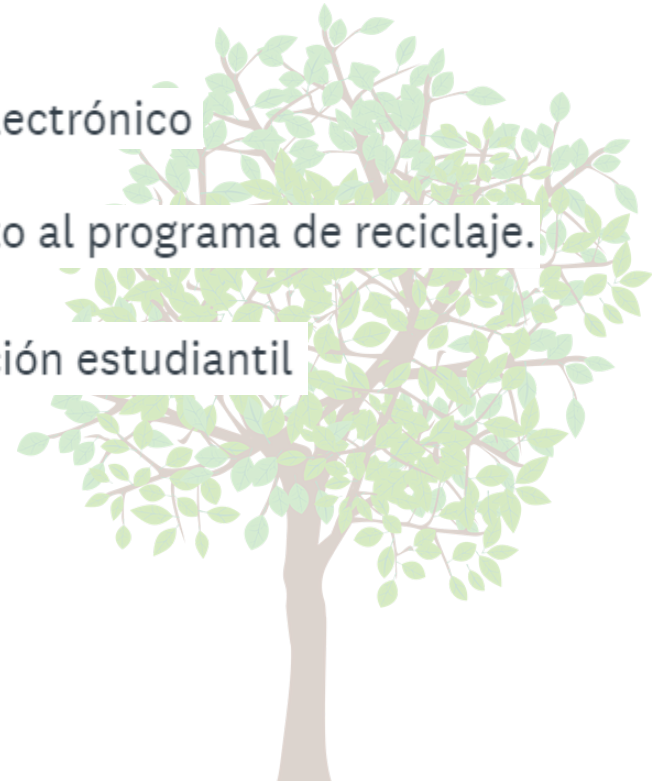
Más inducción al reciclaje brindando información durante cursos y correo electrónico

Realizar ciertos cambios en la soda, dar más información con respecto al programa de reciclaje.

Reforzar el concepto de reciclaje

Informe a toda la población estudiantil

Motivar a los estudiantes a reciclar





Recommendations





Short Term



GetGreen!

- Increase Awareness
 - Infographics
 - Posters
 - Emails
 - Courses/ Extracurricular activities
 - Presentations / Guest speakers



Get Green!

- Establish a *Get Green* Committee
 - Establish a budget
 - New Initiatives
 - Raise awareness
 - Ensure continuation



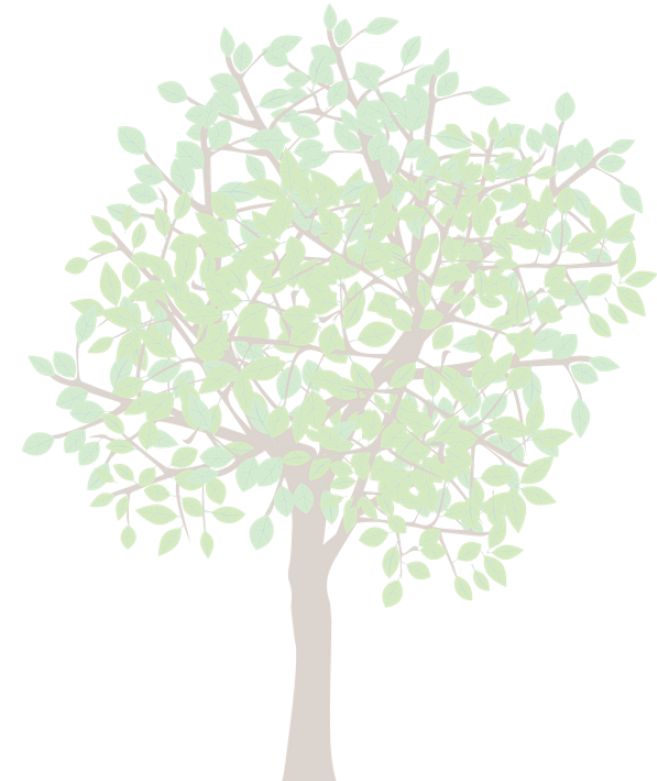
Eliminate Paper

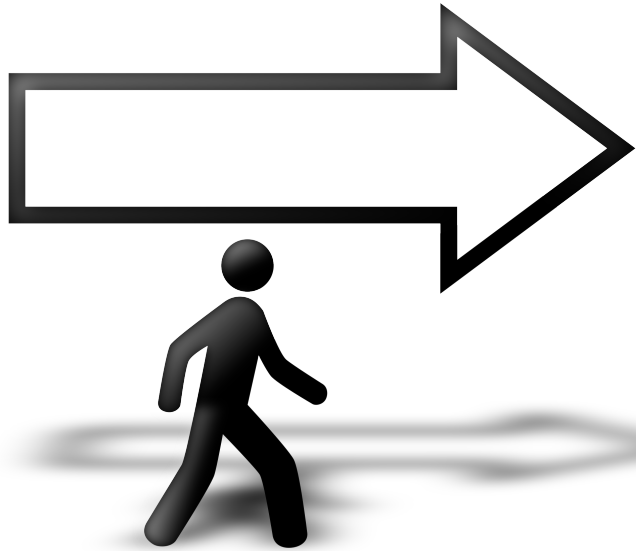
Interview Results



Major Source of Waste: **Paper**

Can Paper be Eliminated or Reduced? **Yes!**





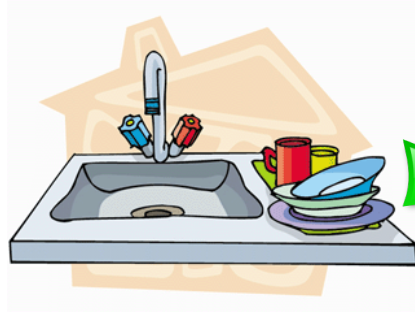
Long Term



Solar Panels at All Locations



Greywater Recycling System



- Reduce Water Usage

- Large Project

- Potentially Very Costly



Purchasing Guidelines

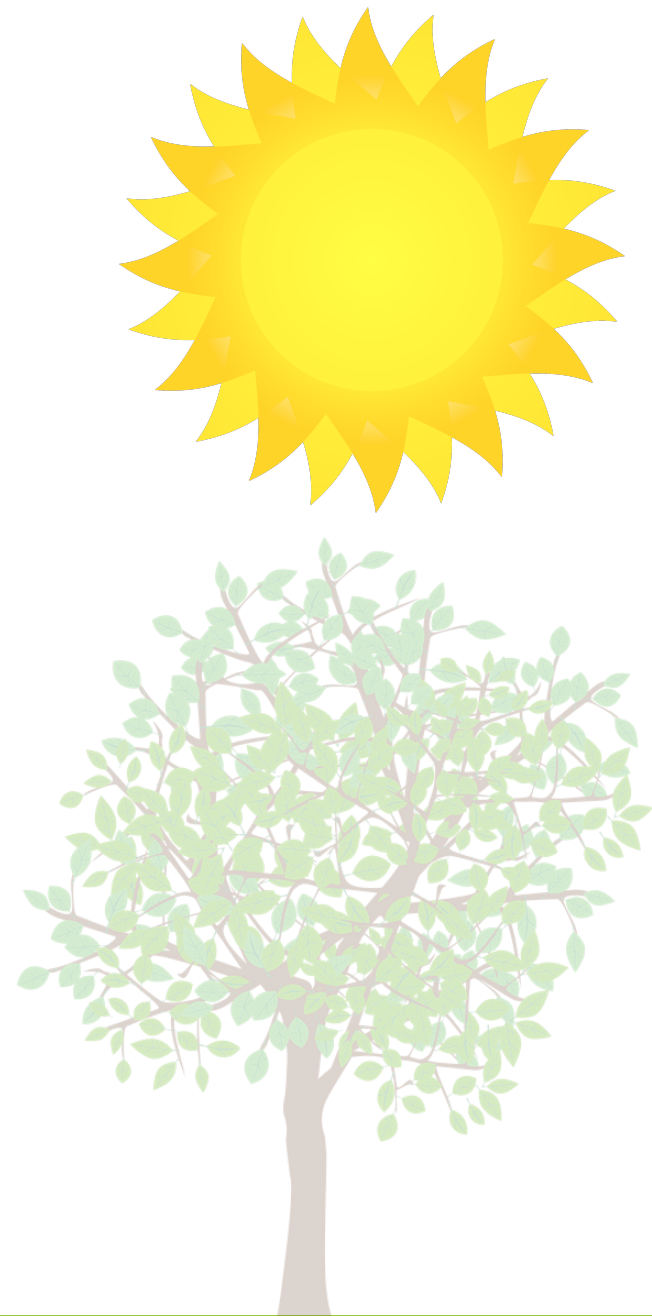
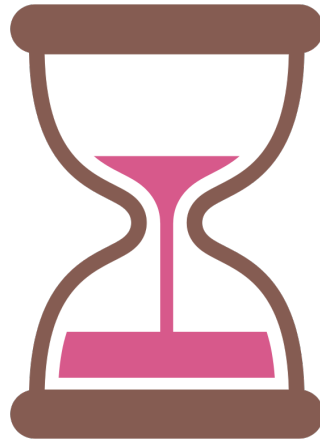


- Durable, not single use or disposable
- Made of recycled materials
- Produced by companies with good environmental track records
- Reduced packaging



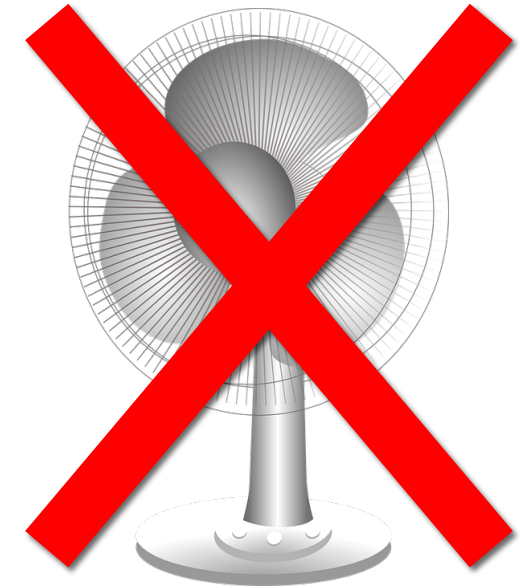
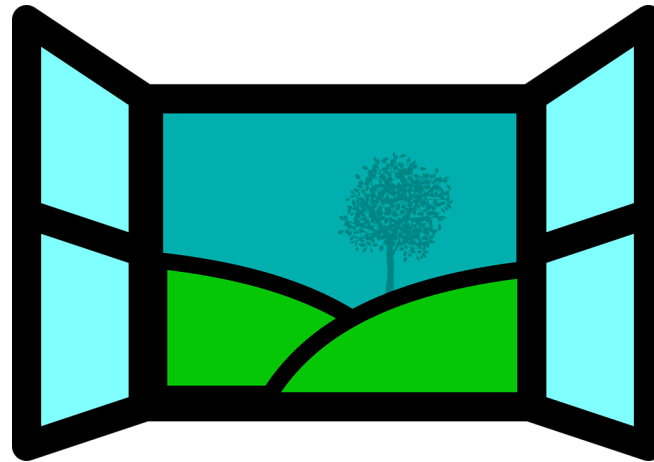
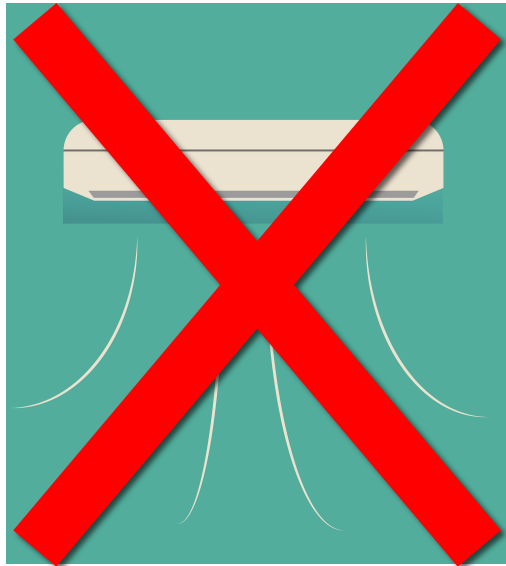
Other Initiatives

- Add timers to lights
- Use more natural light
- Use motion sensor lights



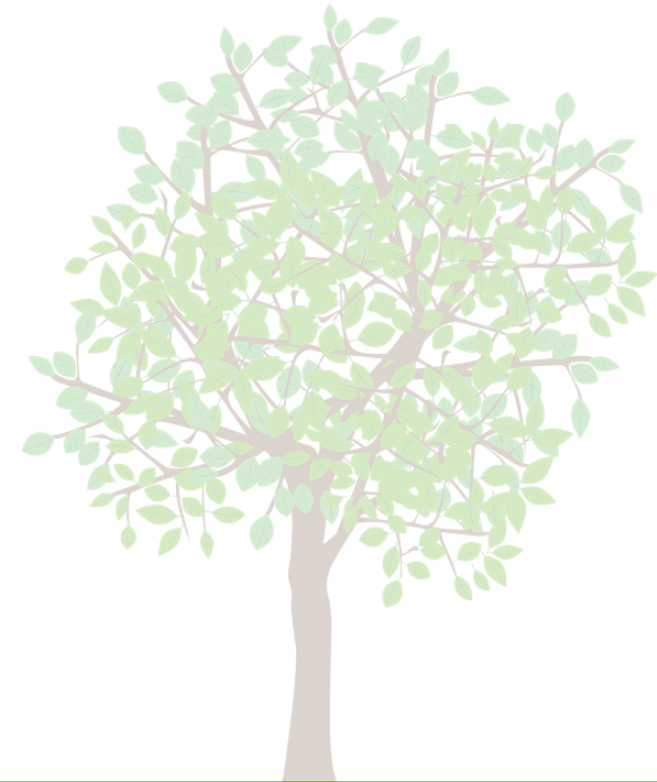
Other Initiatives

- Encourage opening windows instead of using AC or turning on fans



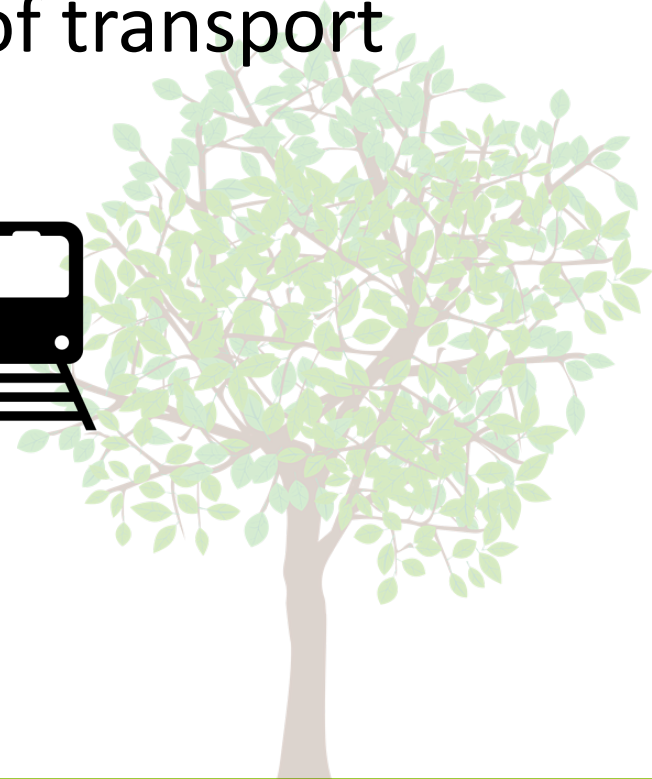
Other Initiatives

- Place recycling bins in ALL classrooms



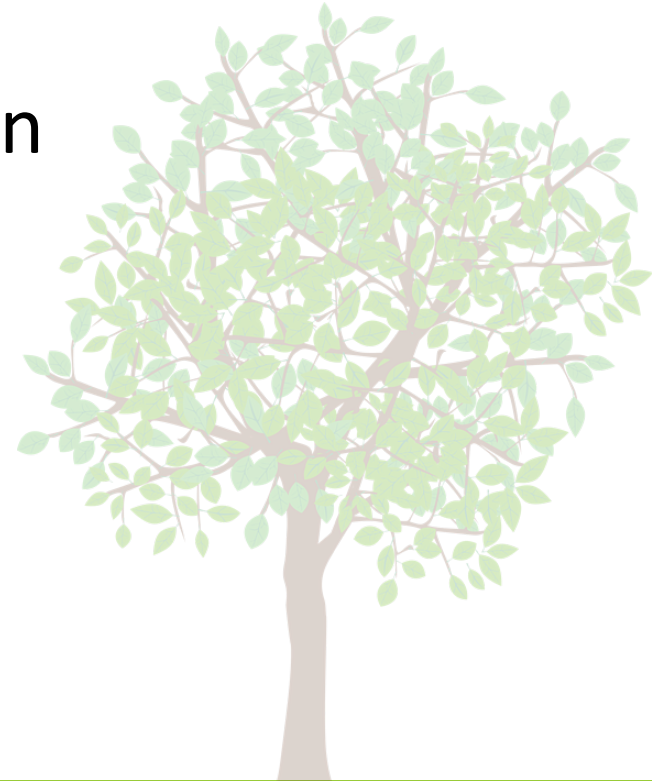
Other Initiatives

- Discourage the use of single occupancy vehicles in favor of public transportation or non-vehicular modes of transport



Conclusion

- Enable the continuation of the success of the program
- Increase awareness, participation, & motivation
- Encourage a more conscientious atmosphere



¿Preguntas?





Thank you!

