

Our Solution

25 food pantries **outside** of food desert; 10+ churches **inside** food desert

Utilize volunteers and their vehicles to transport food from food pantries to churches

Pass out food on sundays after service

10 minute walk to nearest church
1 hour walk to nearest food pantry



How?

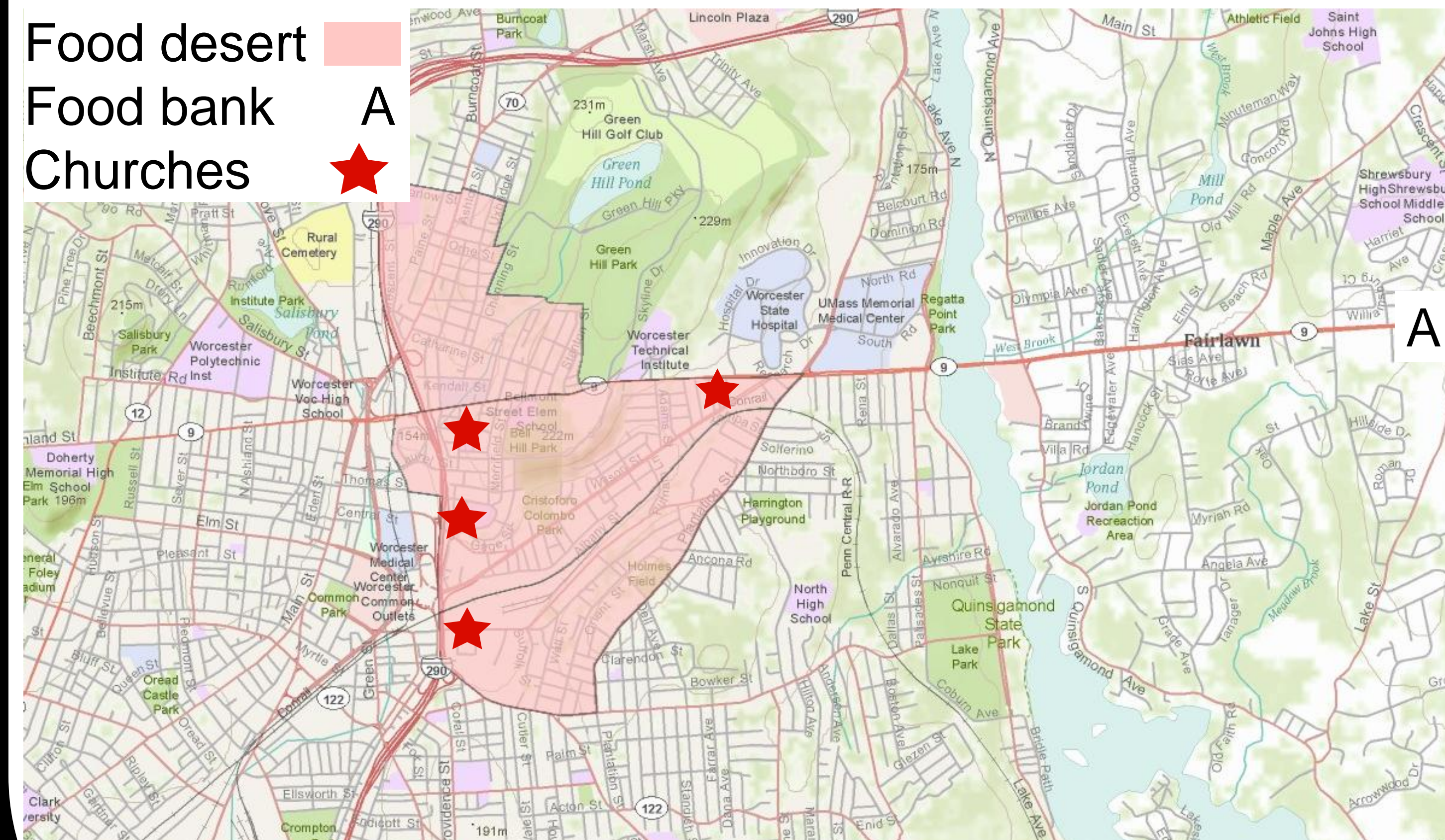
- 1) Get in contact with administrators from the food pantries and the churches explaining our plan.
- 2) Speak to the major donors to the food pantries to get their support.
- 3) Spread the word about the churches serving food after service.
- 4) Use newspaper, tv, and internet ads.
- 5) Post fliers in food deserts, the churches and food pantries.
- 6) Utilize the network of volunteers at the food pantries and WPI to help transport the food to the churches.



The Problem

Worcester food deserts lack the necessary stores to provide affordable nutritious food.

- 24% of residents there are obese or malnourished
- 8932 people with low access to food
- 2447 of those have low income
- 811 households do not have vehicles
- 1/3 of children live in families that are unable to afford a nutritious diet.
- 1 hour walk to Nearest food pantries



Tracking Progress

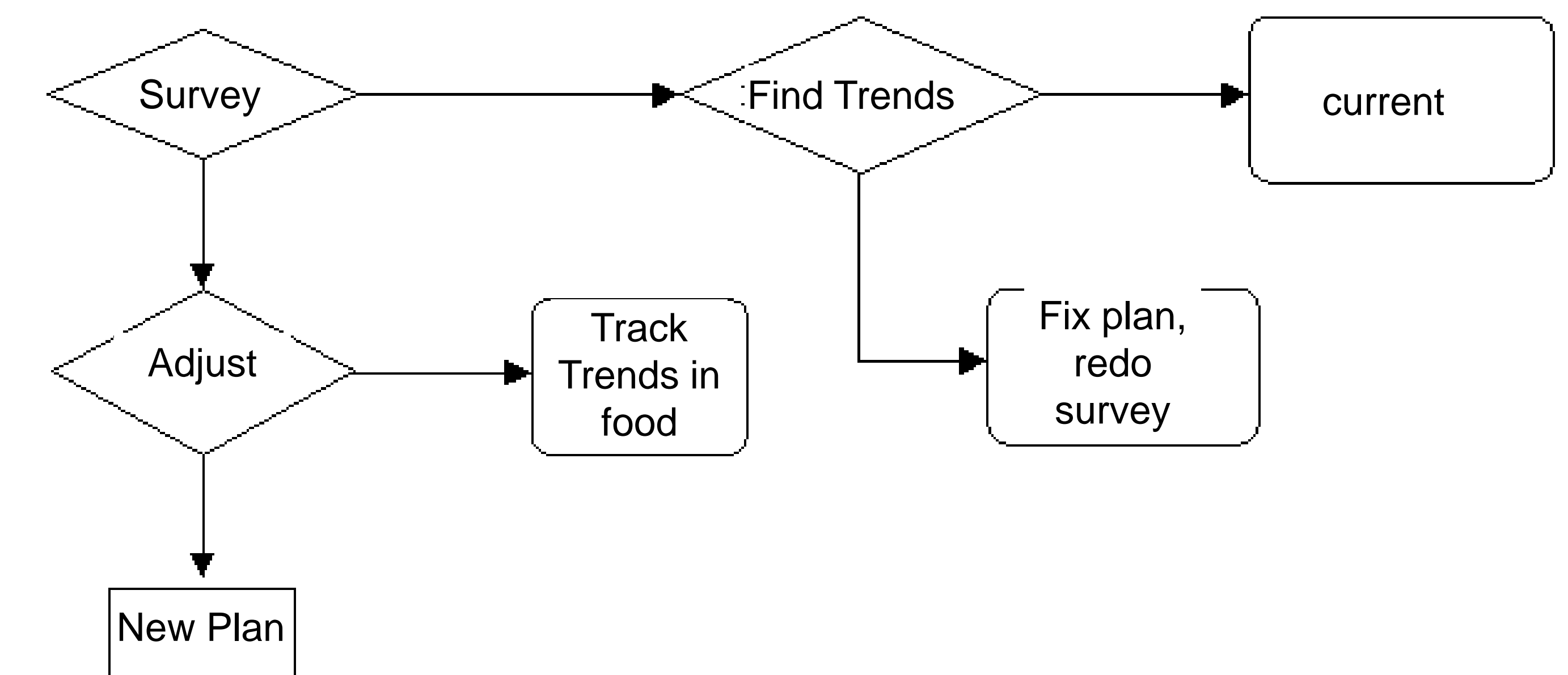
Anonymous survey made to be given out at first event

Survey given every following two weeks

Catalog the food that comes in and goes out

Find trends so that food is always available

Use survey to see if progress is Positive or negative



References

1. Ers.usda.gov (n.d) Retrieved November 8, 2011 from <http://www.ers.usda.gov/data/fooddesert/fooddesert.html>
2. Foodbankwma.org (n.d) Retrieved November 9, 2011 from <http://www.foodbankwma.org/learn/local-hunger-facts>
3. www.rachelstable.org (n.d) Retrieved November 8, 2011 from <http://www.rachelstable.org>
4. Worcesterfoodpolicy.org (n.d) Retrieved November 8, 2011 from <http://www.worcesterfoodpolicy.org/>
5. Wpi.edu (n.d) Retrieved November 8, 2011 from <http://www.wpi.edu/Pubs/E-project/Scanned/06D328M.pdf>
6. <http://cdn.mainstreetconnect.us/sites/default/files/imagecache/Slideshow/pantry1.jpg>
7. <http://www.bestrateofclimb.com/WLF-Logo-WorcesterCountyFoodBank-cropped.jpg>
8. <http://www.google.com/imgres?q=baptist+churches&hl=en&gbv=2&sig=107189472428401100724&biw=1024&bih=739&tbm=isch&tbnid=7FCnuQsSny7e1M&imgrefurl>
9. Dolnick, Sam www.nytimes.com (n.d) retrieved November 21, 2011 from <http://www.nytimes.com/2010/03/14/nyregion/14hunger.html>

Benefits

Benefits	Costs
More accessible food	15 -Volunteers/Church
Strengthens the community	2-4 -hours/volunteer
More nutritious diet	5-10\$ -Gas
Free time for families	400\$ -Refrigerators
	Utility costs -Electricity