

Piecing Together the Boston Harborwalk

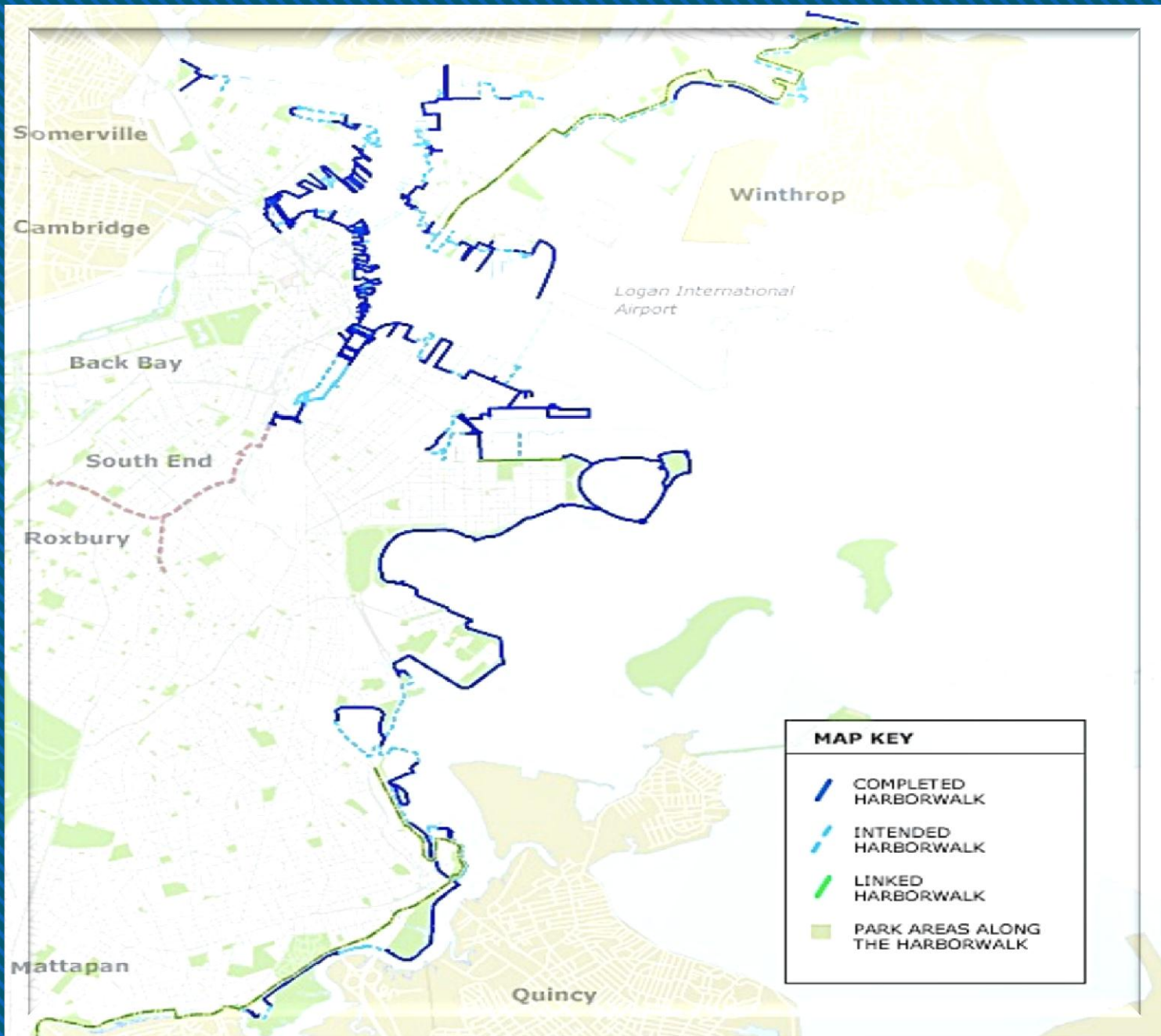
Goals, Objectives, Methodology,
Findings, Conclusions &
Recommendations

Danielle Masone, Molly Mioduszewski, Devin Mulcahy and Kelin Song

History

- Clean up of the Boston Harbor
- Gentrification of waterfront
- Chapter 91, The Massachusetts Public Waterfront Act







Project Missions

- Create an inventory that will aid The Boston Harbor Association
- Understand the correlation between:
 - Land use and development
 - Demographics and development
- Evaluate the impact of having a mandated public walkway on private land

First Goal

Provide The Boston Harbor Association information that will help expedite the completion of the Boston Harborwalk

First Goal's Objective

- Develop an organized Excel inventory and Geographic Information Systems map of the entire Boston Harborwalk
- Determine any correlation between:
 - Land use and development
 - Demographics and development

First Goal's Methodology

- Separate Harborwalk into parcels
 - Observe the state of maintenance
 - Observe the existence of amenities
- Research and analyze information on land use and demographics:
 - Population density
 - Income
 - Ethnicity

Geographic Information Systems



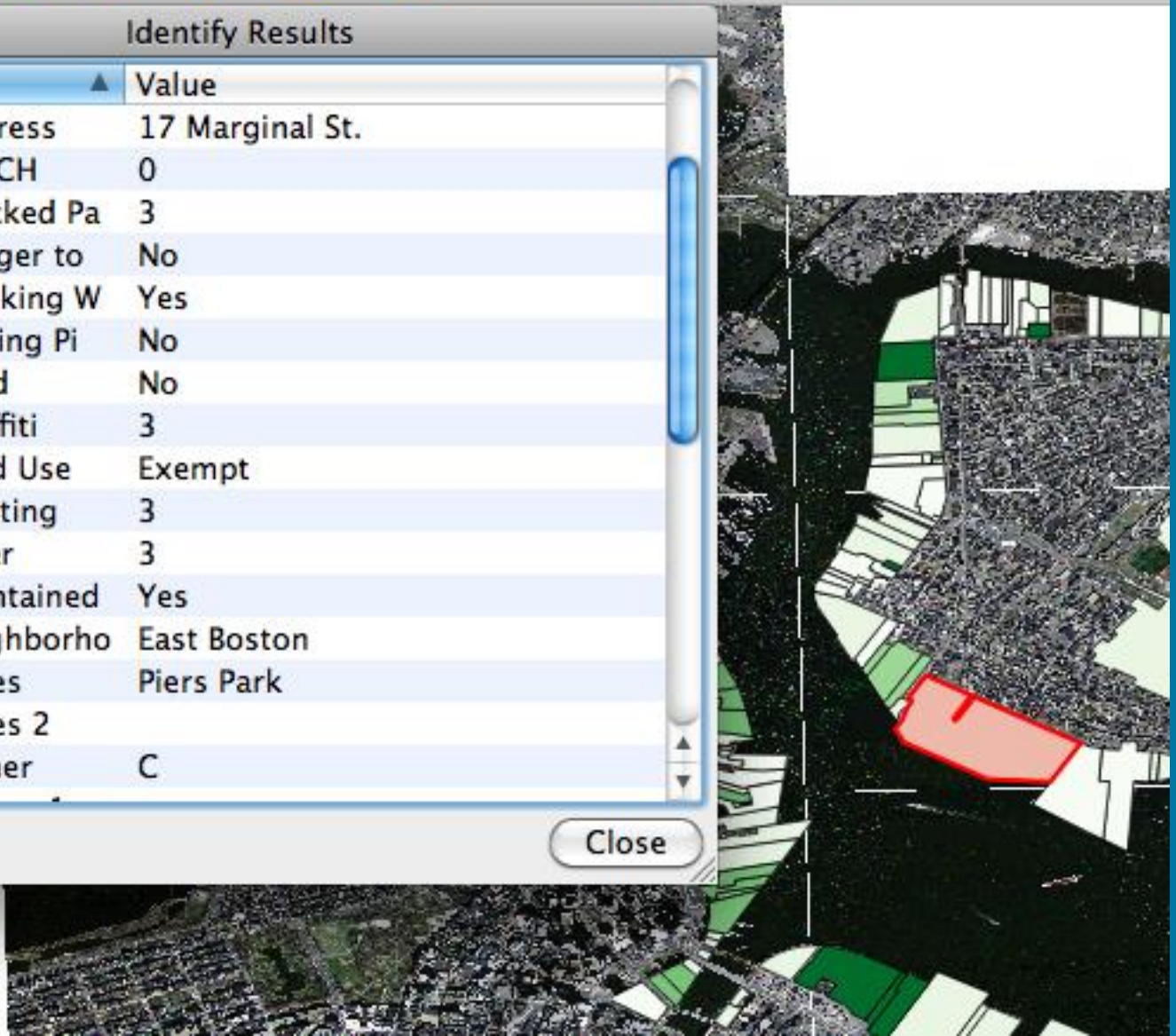


Identify Results

Feature	Value
Address	17 Marginal St.
BATCH	0
Cracked Pa	3
Danger to	No
Drinking W	Yes
Fishing Pi	No
Food	No
Graffiti	3
Land Use	Exempt
Lighting	3
Litter	3
Maintained	Yes
Neighborho	East Boston
Notes	Piers Park
Notes 2	
Owner	C

Help

Close



Second Goal

Evaluate the impact of having a mandated public walkway on private land

Second Goal's Objectives

- Determine the benefits and drawbacks from property managers
- Determine the opinions of The Boston Harbor Association's board members

Second Goal's Methodology

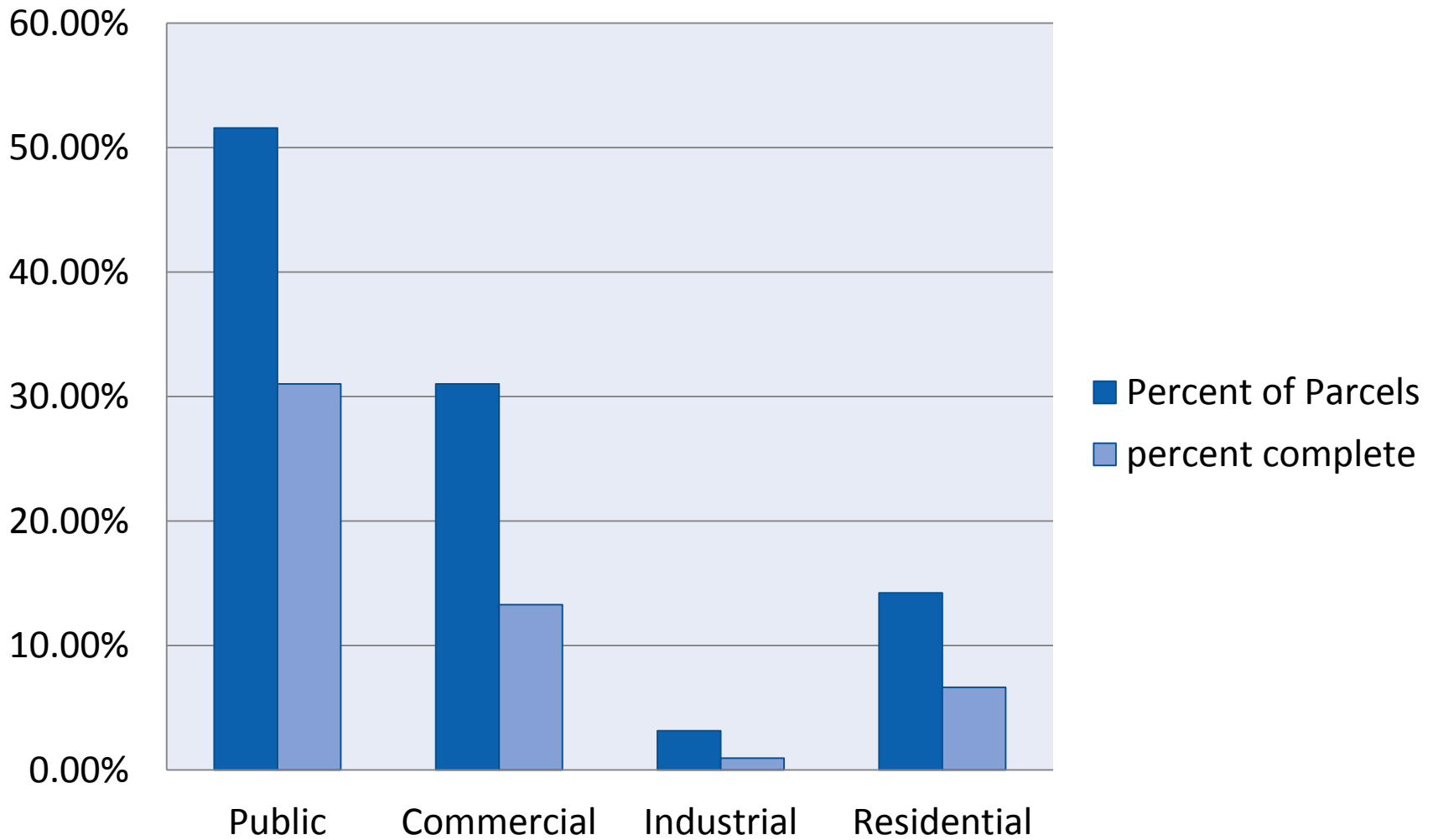
- Survey waterfront property managers
 - Hotels
 - Restaurants
 - Institutions
 - Agencies
- Interview The Boston Harbor Association's board members

Findings

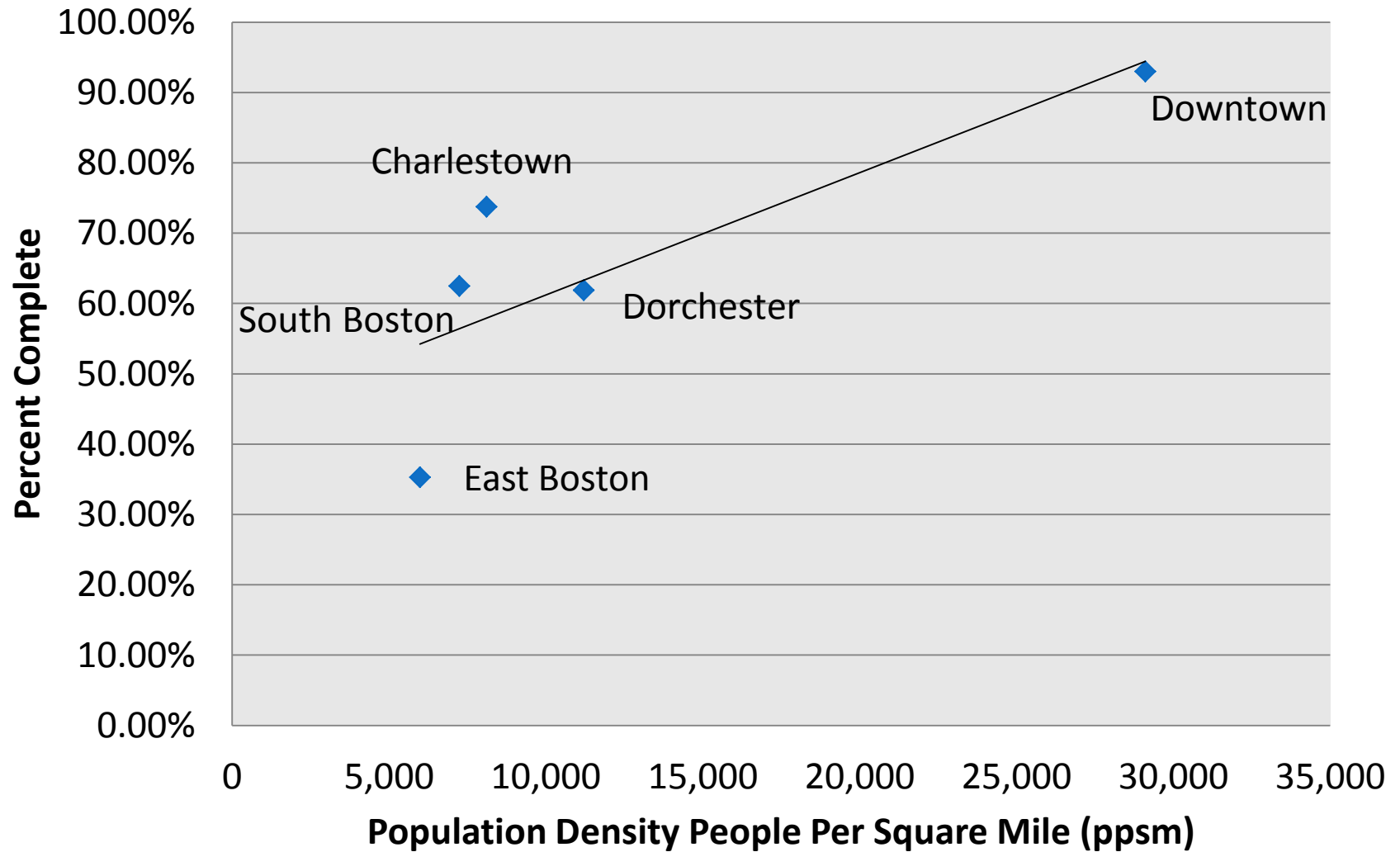
- Percent Complete actually 60.64%
- Uncertainty of some sections completion



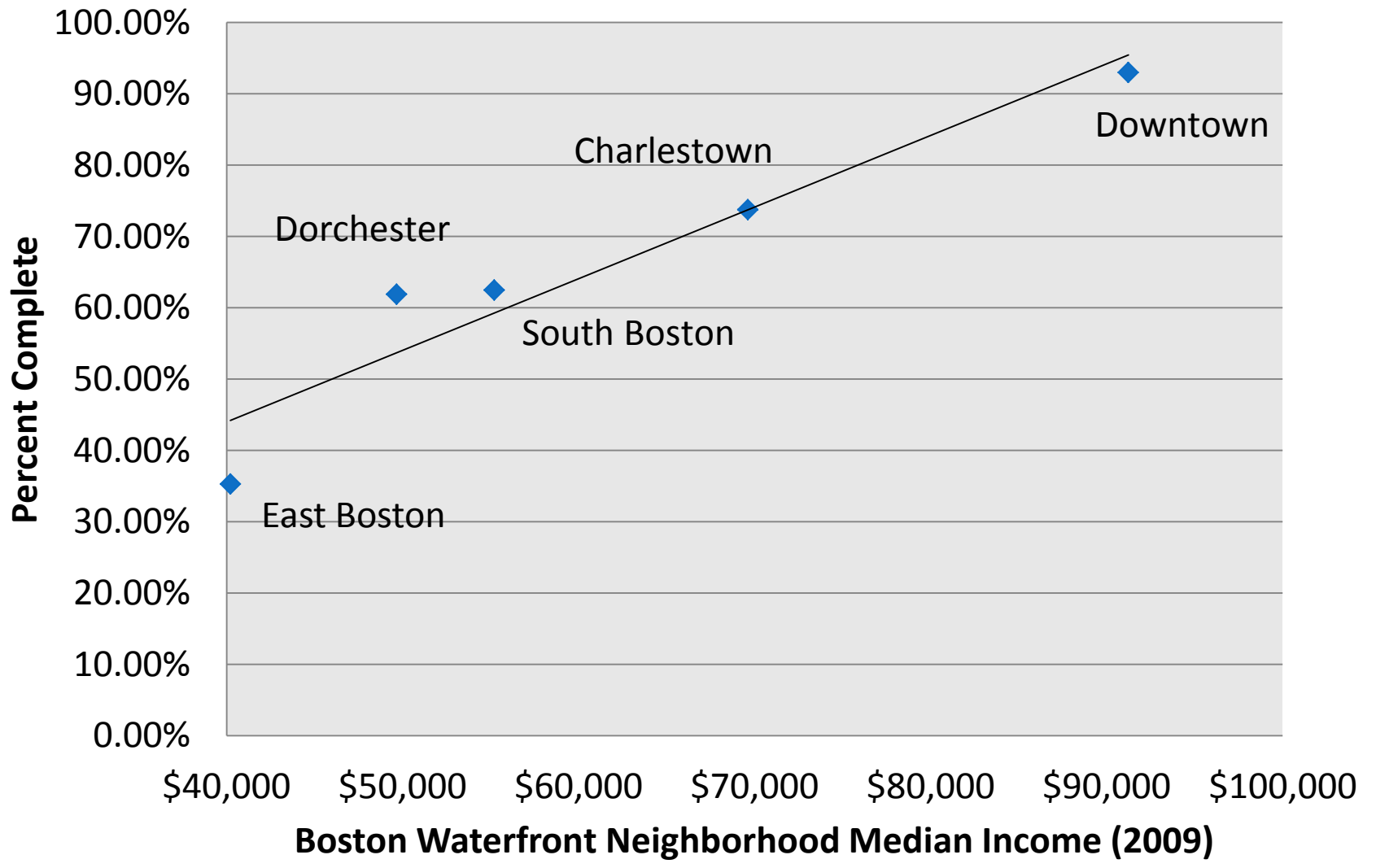
Land Use



Population Density



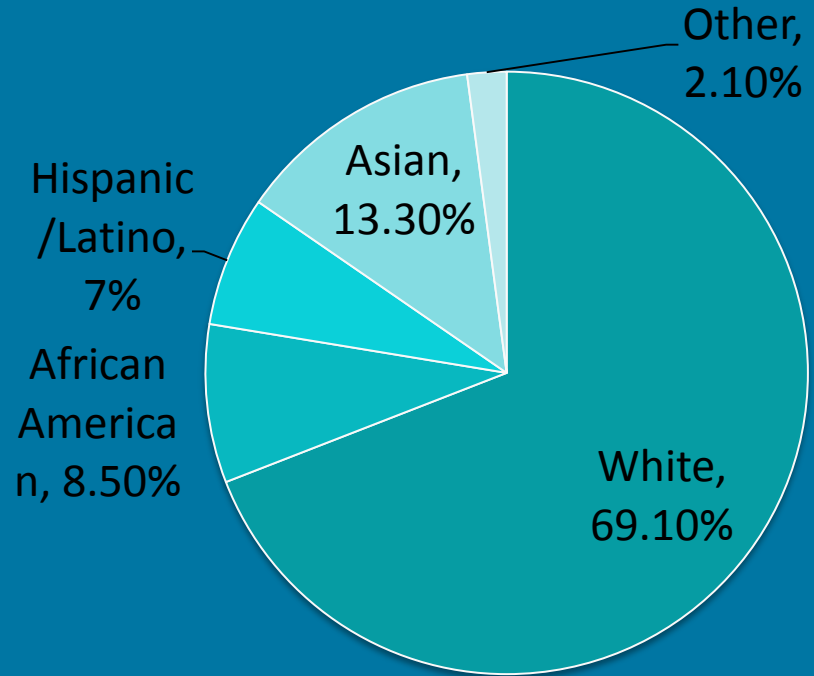
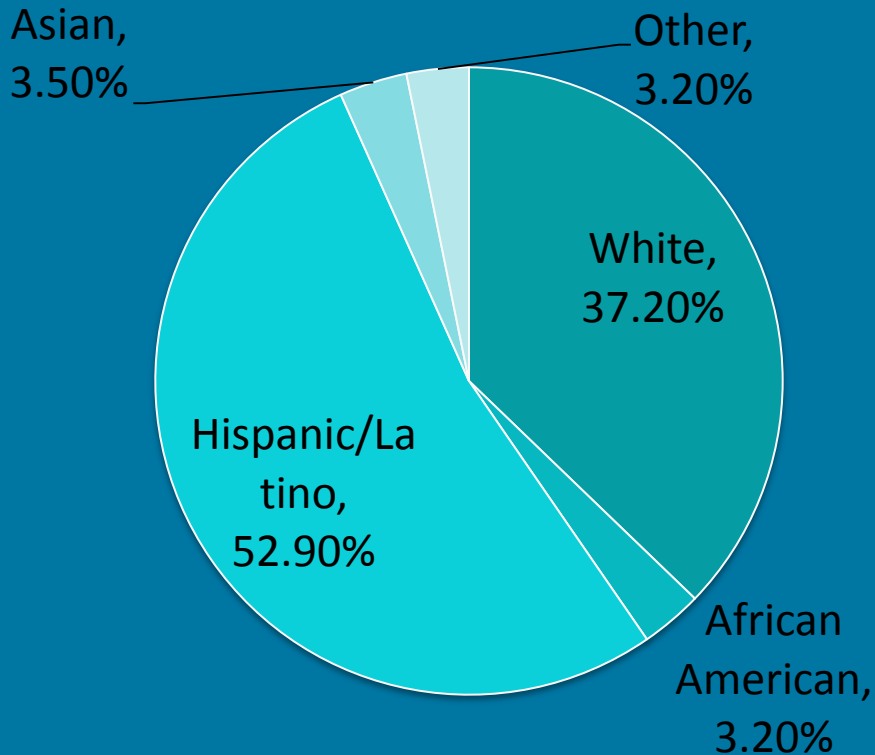
Income



Ethnicity

East Boston 35.27% Complete

Downtown 97.27% Complete



Survey Findings

- Difficulties in contacting property managers
- Positive feedback
 - Increased foot traffic
 - Increased public exposure

Interview Findings

- Interviews suggest successful implementation of policy
 - Underlying interest in the Harbor
 - Less expensive for the public
 - Less maintenance for the city

Conclusions

- Cannot directly expedite the completion of the Boston Harborwalk
 - Collected data can improve current Harborwalk
- Chapter 91 is a successful, though hints towards environmental injustice

Recommendation

- Further research environmental injustice by demographic and developmental trends
 - Allocate more funds

Acknowledgments

- The Boston Harbor Association
 - Executive Director Julie Wormser
 - President Vivien Li
 - IT Specialist Chris Rowe
- Professor Susan Vernon-Gerstenfeld
- Professor Angel Rivera
- Professor Ingrid Shockey
- Interview and Survey Participants

Questions?

