

Approaches to Regenerative Transformation

D23 IQP Final Presentation

Gabby DiMauro, Abby Gallagher, KJ Gallison, Livia Skende



promentum



Meet the Team



Gabby DiMauro



Abby Gallagher

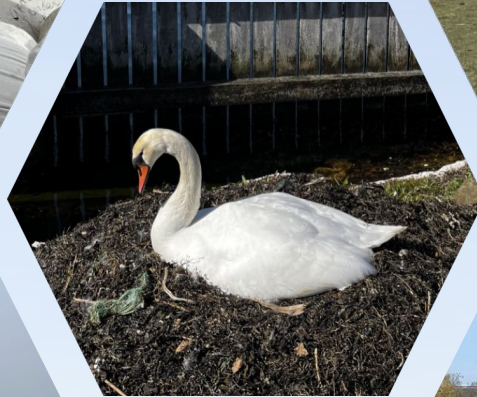
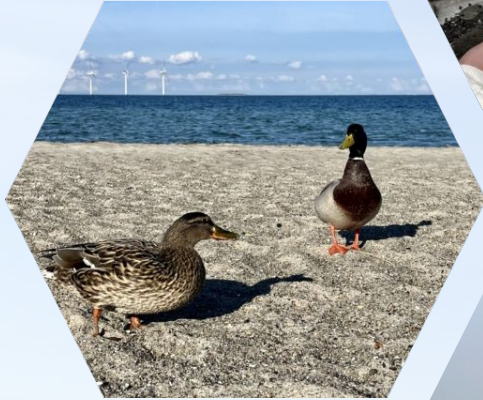


KJ Gallison



Livia Skende

From Sustainability to Regeneration: a Paradigm Shift



Regeneration in Practice



Doing Nothing



Sustainability



Regeneration

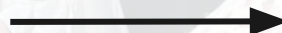
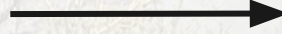
Sustainability



Buying honey from local beekeepers

Trying not to waste food

Building a roof using recycled materials



Regeneration

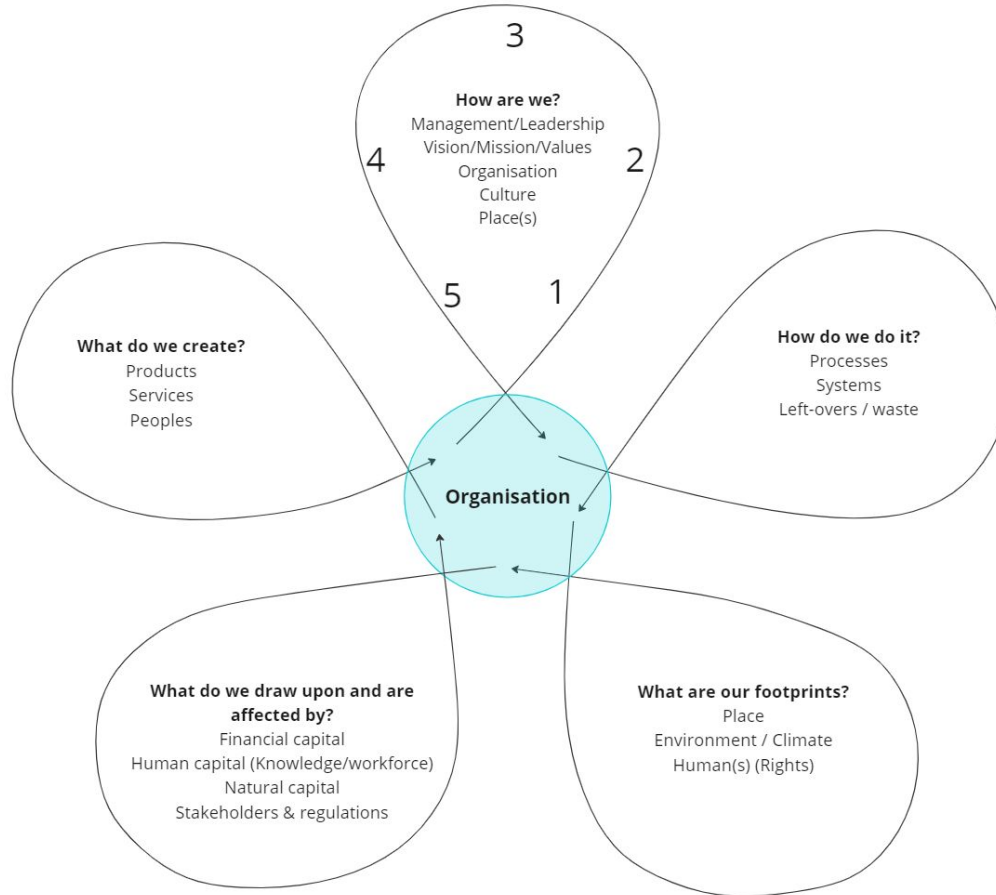


Planting flowers for the bees

Composting food scraps

Implementing a rooftop garden

Promentum's Regenerative-Sustainability Model

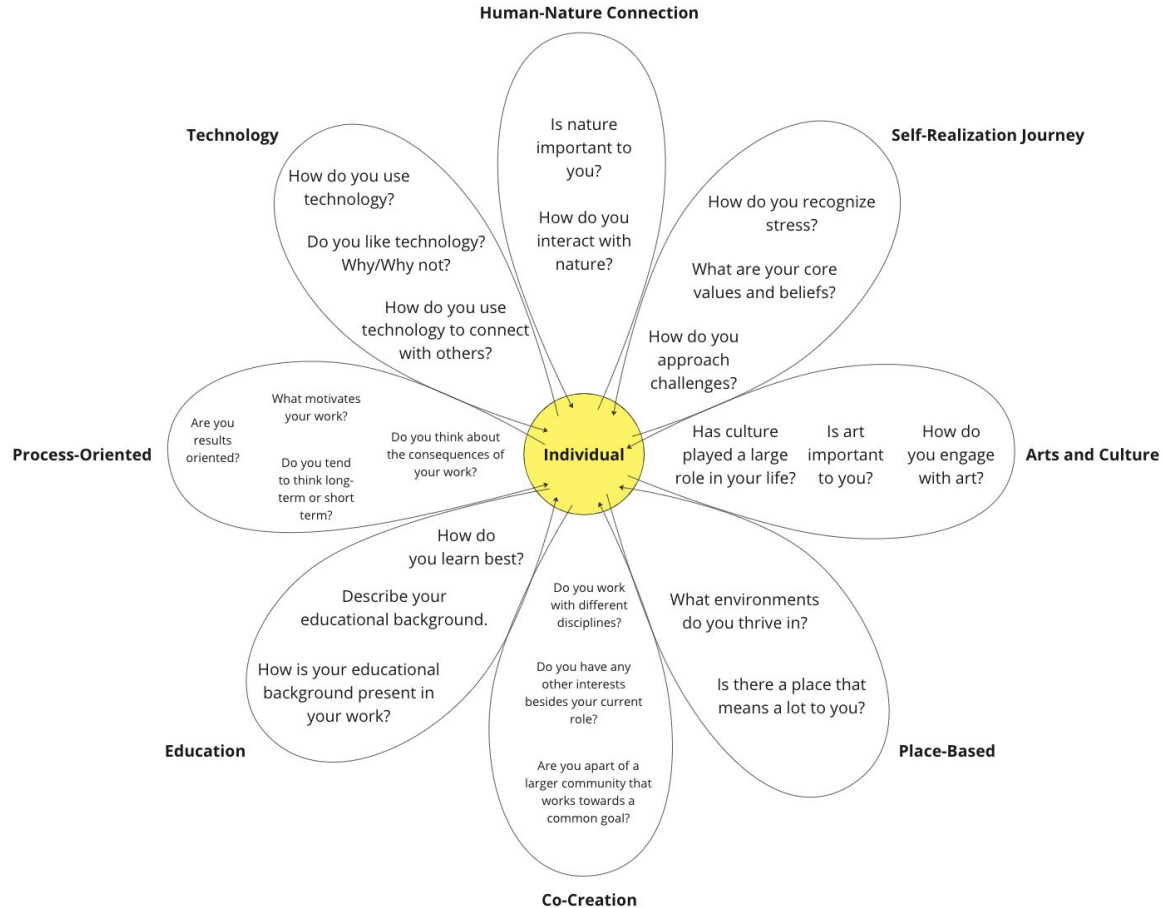




Our Project Mission

The mission of our project is to discover different ways people have been involved in a regenerative paradigm shift and the various methods they can use to influence others to contribute in order to help Promentum create an effective dialogue with their clients.

Individual-Based Regenerative Transformation Model



Our Strategy

**Partner
Interviews**

+


***The Nest*
Participant
Interviews**

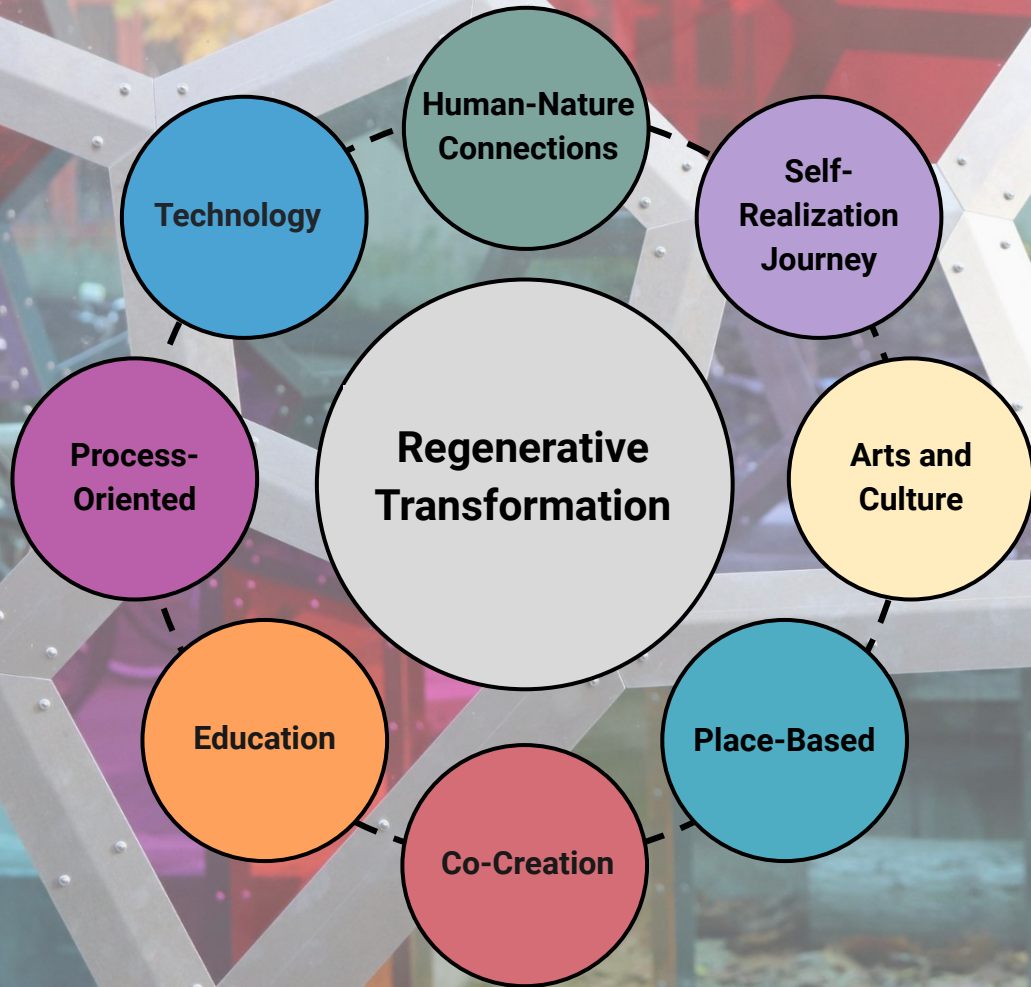
=

Model

Created different
questions based on
themes using
understandable
language

The Nest Participant Interviews

- What did you take away from this event?
 - What do birds mean to you?
 - How would you describe your connection with nature?
- 
- Could you describe what you just attended?
 - What did you learn or take away from this event?
 - Are birds important to you? Why or why not?
 - Is nature important to you? Do you feel connected to it?
 - How do you engage with nature?
(Could be many things, ex: bird watching, journaling, gardening, nature walks, etc.)
 - Do you often attend events like this?



Human-Nature Connection

11/15

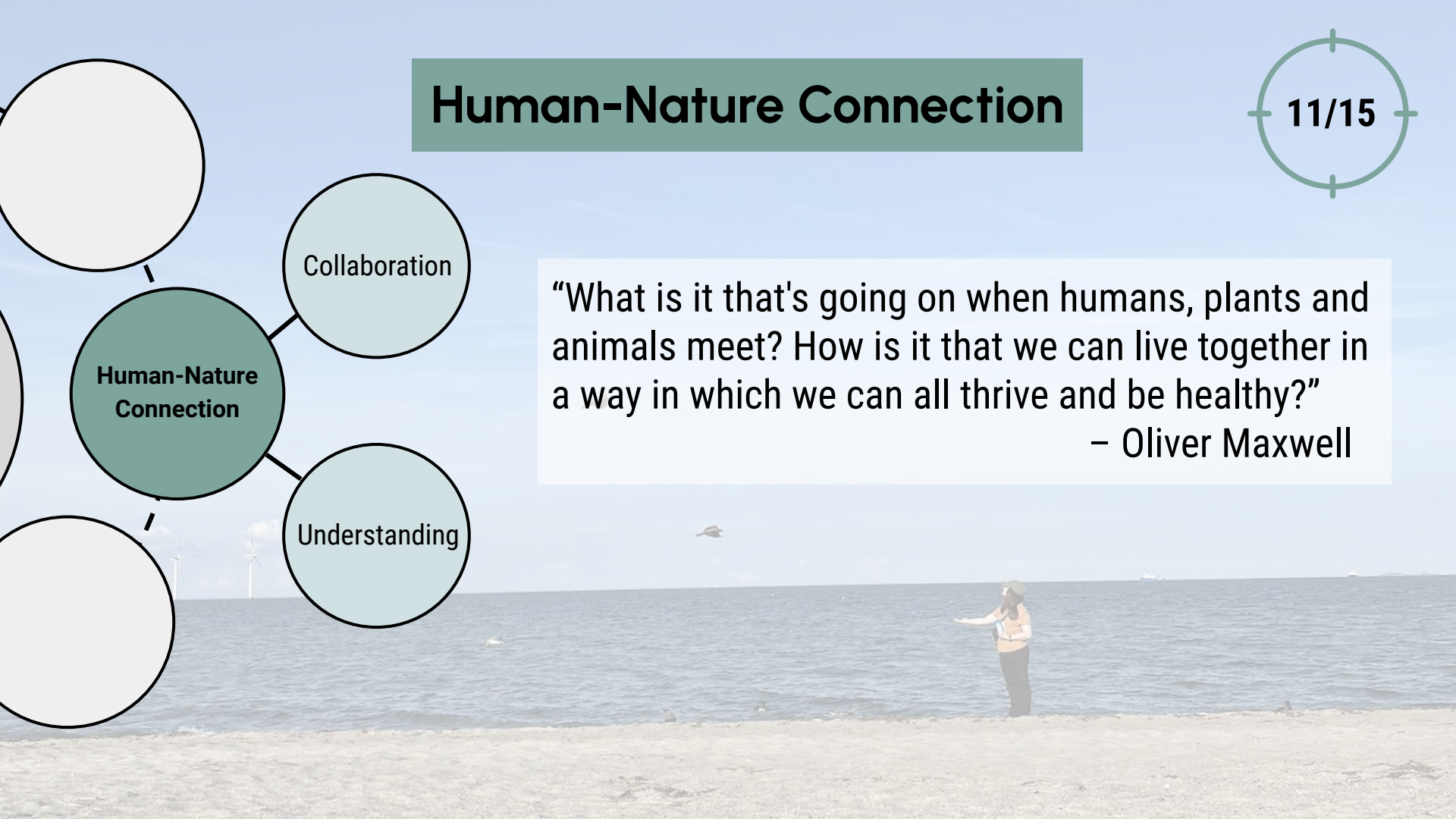
Human-Nature
Connection

Collaboration

Understanding

“What is it that's going on when humans, plants and animals meet? How is it that we can live together in a way in which we can all thrive and be healthy?”

– Oliver Maxwell



Self-Realization Journey

11/15

Self Realization
Journey

Capacity
for
change

Engagement

“I believe that you need to have an inner change to make an outer change.”

– Ulrika Jansson



Arts and Culture

9/15

Arts and Culture

Engaging

Thought
Provoking

“Art and culture is a language that crosses borders in a way that nothing else can.”
– Bente Milton

HJÆLP CHRISTIAN IV MED
AT SKABE EN BLOMSTEREKSPLOS
Sådan laver du dit

Place-Based

11/15

Place-Based

Deeper
connections

Start Local

“It's about ... how we understand that those habitats, wildernesses around Copenhagen, or everywhere else, are connected to each other, and how we all depend on that understanding of connecting...”

– Nikolaj Noel Christensen

Co-Creation

14/15

Co-Creation

Interdisciplinary

Interspecies

Community

“I think... what we have to really understand is that this transdisciplinary approach is the only way forward.”

– Christina Staudlbauer

Education

8/15

Education

Engaging
Youth

Utilizing Diverse
Backgrounds

“But then let them know that if they know the history, the natural history of the place, they can actually change things. “

– Nikolaj Noel Christensen

Process-Oriented

9/15

“...I will say we need to be more curious on the process, to be actually present in the process, and invite curiosity in, invite asking questions, invite experimenting, invite failures in.”

– Sofie Kempf

Process-Oriented

Long-Term
Thinking

Organization

Meaningful
Work

Technology

6/15

Technology

Important and
Powerful Tool

Easily Misused
and Damaging

“The fact that media becomes three dimensional has a massive impact on... media's ability to move people, to affect people, and to become experiences that people can take stuff away from.”

– Matias Katejavaara Seidler

“They learn how to work through the screen...just imagine a world without people being able to really connect and being present with each other, being able to sense.”

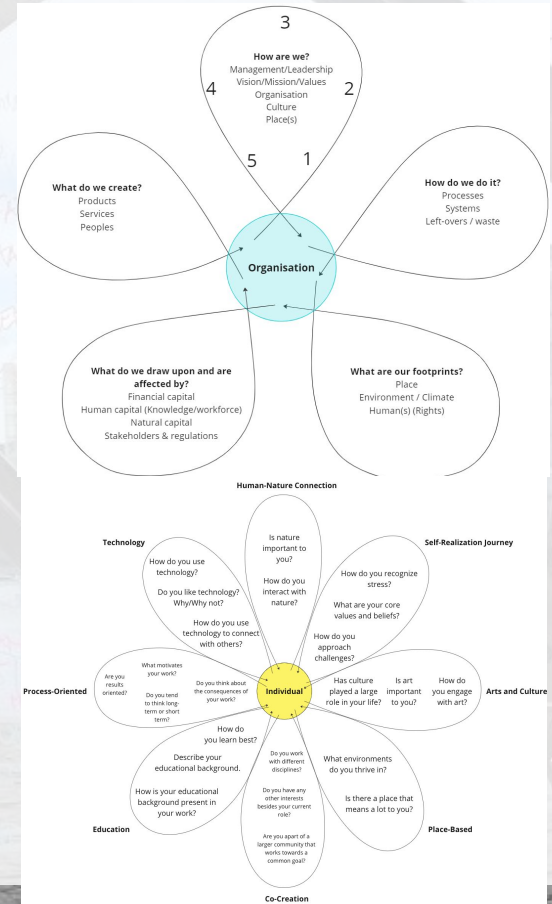
– Sofie Kempf

The Regenerative Paradigm: Findings

- Participation is under free will.
- People must individually undergo a change.
- People learn about regeneration in different ways.
- Regeneration is a challenging concept for people to understand.
- Impact is difficult to measure.

The Regenerative Paradigm: Recommendations

- Utilize both models with the client
- Organize a broad range of events for their clients employees:
 - Collaborate with different disciplines
 - Relate events to a place employees are connected to
 - Emphasize working together
 - Offer a meeting place after programs
- Future studies: Methods to measure impact





Thank You!

WPI Advisors

Peter Hansen
Jim Hanlan

Our Sponsors

Oleg Koefoed
Promentum
Growing Pathways

Interviewees

Morten Rubæk
Henriette Bachmann
Nikolaj Noel Christensen
Patricia Csobánczi
Lars Engberg
Ulrika Jansson
Sofie Kempf
Oliver Maxwell

Bente Milton
Nana Francisca
Schottländer
Matias Katejavaara Seidler
Christina Staudlbauer
Stine Tange
Linh Le
Tanya Mortan Rydell