

# Teak Efficiency and Environmental Education Methods for Batipa

Nicolas Amato (AE), Ryan Johnson (ChE), Connor Lemay (ME), Theodorus Lundblade (MGE)  
 Advisors: Profs. James Chiarelli, Stephen McCauley, and Alex Sphar - Oteima Liaison: Dr. Francisco Ugel

**PROJECT STATEMENT:** The goal of this project was to find solutions regarding methods to deal with teak by-products, prevent soil erosion due to increasing cattle pastures in the Gualacán Corridor, and share Batipa's agricultural techniques with other local farms.

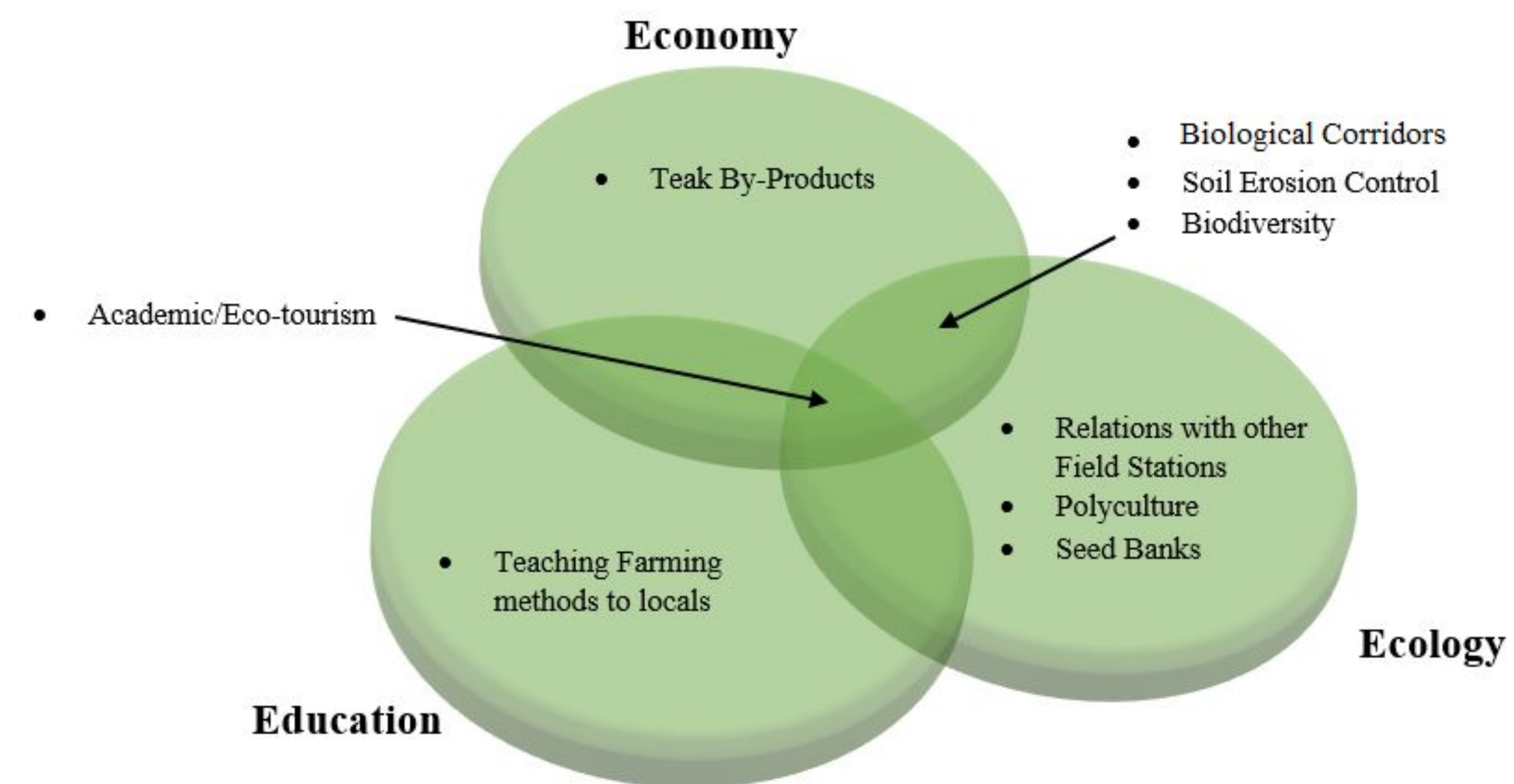


### About Oteima

- The Universidad Tecnológica Oteima is a private university located in the city of David.

### About Batipa

- Peninsula located 40 km southeast of David.
- 1000 hectare teak plantation
- 400 hectares of cattle pastures
- 600 hectare nature refuge



### METHODOLOGY

#### Objective One: Strategic Planning and Prioritization of Needs

- 11 projects initially put before us.
- Witnessed an overlap of three main ideas; economy, education, and ecology.
- Chose three topics that encompassed multiple others.

#### Objective Two: Resource Evaluation

- Observed what resources Batipa and Oteima had in order to make personalized solutions.
- Studied agricultural methods, local landscape, and effective agricultural education techniques.

#### Objective Three: Finding Possibilities

- Evaluated on-site needs to create possibilities for Batipa to consider.

### SPREADING OF KNOWLEDGE AND TECHNIQUES

Program to attract local farmers and learn the techniques Batipa has implemented.

- Increase number of average fully grown cattle per hectare.
- Gaining of reputation.
- Word of mouth most effective, but slow process.

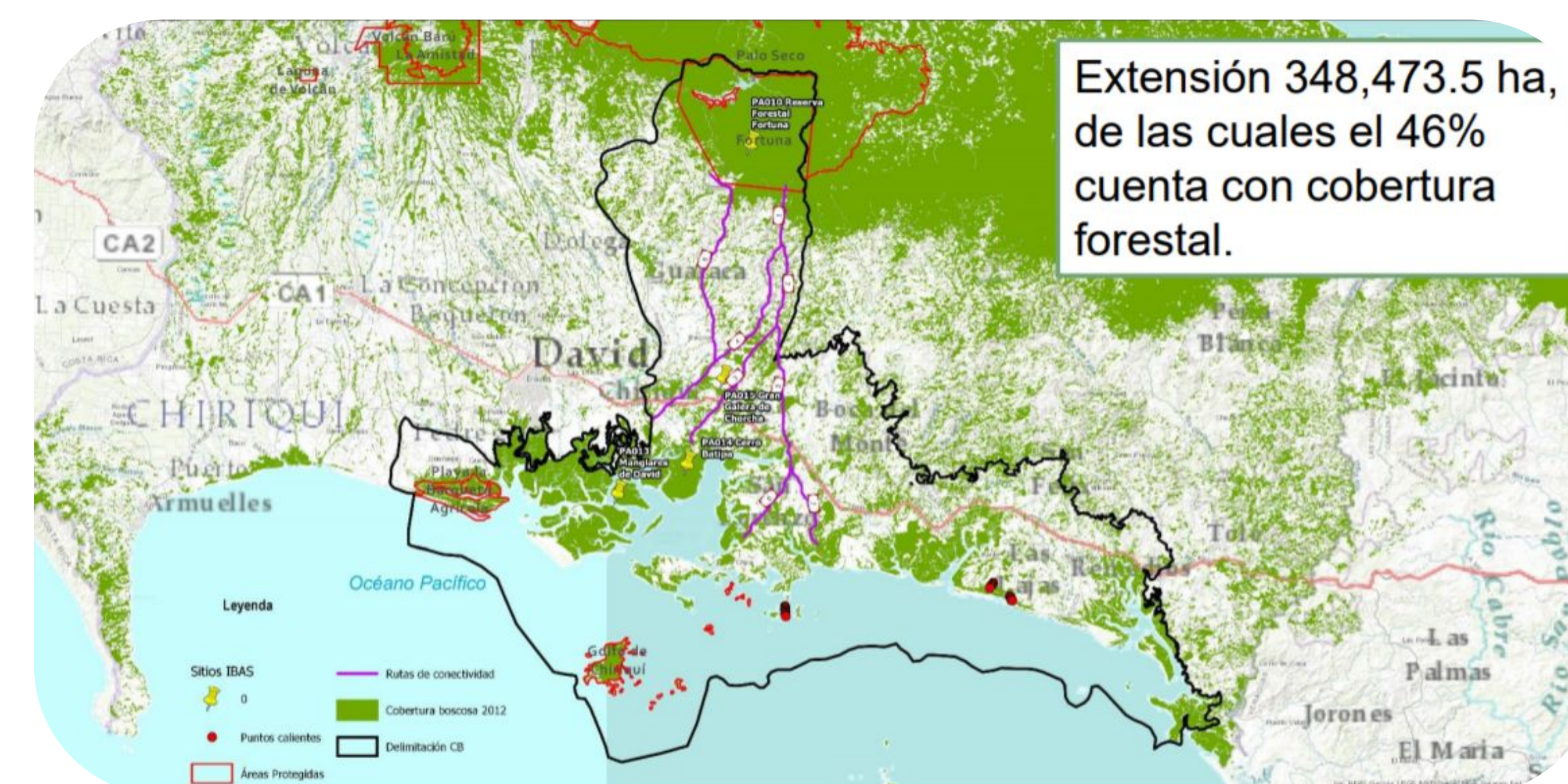
### ALTITUDINAL BIOLOGICAL CORRIDOR OF GUALACA

Increase vegetation on "primate bridges" that cross the newly expanded Pan-American Highway.

- Hanging baskets with clinging vines to make bridges more appealing to climbing animals.

Erosion control via sapling program

- Help locals with pasture erosion by offering pioneer plants to get root base back to soil.



### TEAK BY-PRODUCTS

Increase trimming distance from 7m to 9m

- Use of scaffolding system to gain 2m extra height.
- Cheap equipment for more profitable lumber

Creation of slab racks

- Creates 3.62m<sup>3</sup> bundles of slab
- Off-ground storage to easily tie up and transport.

Purchase used chipper at equipment auction

- Large initial spending, but can chip all excess lumber including brush piles into sellable mulch.

