



WPI

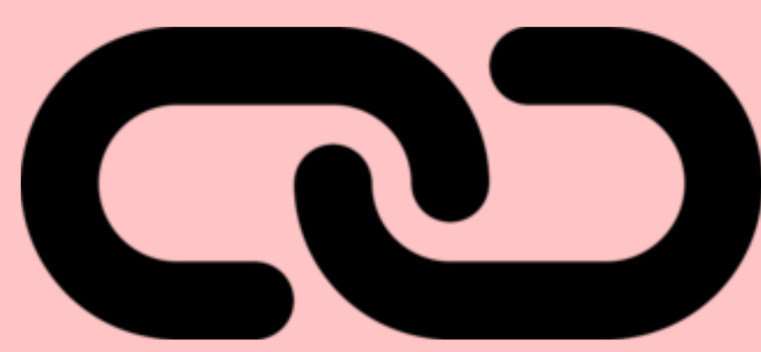
Multidimensional Poverty Analysis: Will the Poverty Stoplight work in Worcester?

By: Nicole Franco, Benjamin Hylak, Sylvia van der Weide

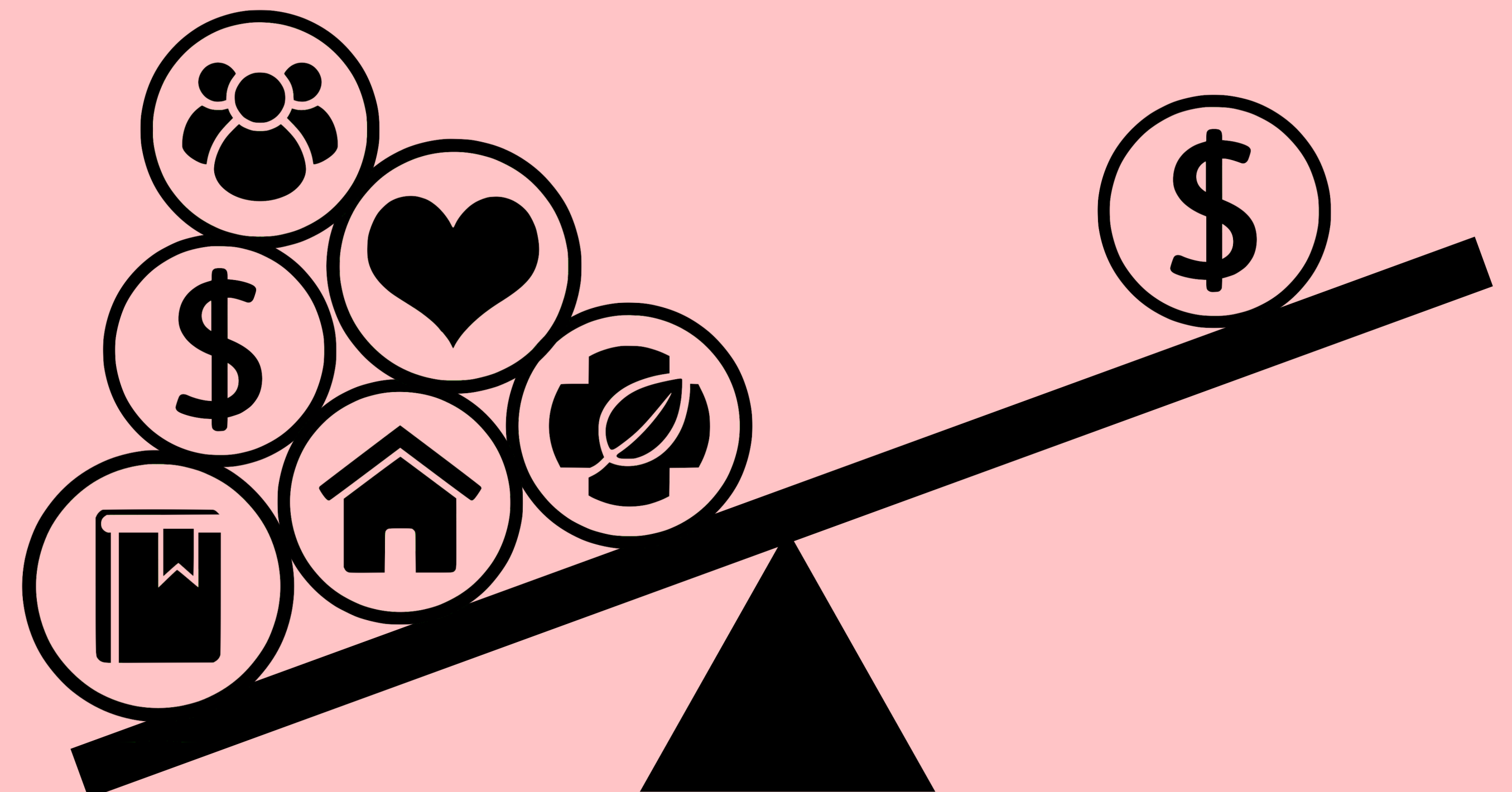
Advisors: Prof. Paul Kirby (HUA), Prof. Robert Traver (US), Mariana Vertoni

GPS: Ignorance is NOT Bliss

Problem



Poverty



Poverty has a direct and proven effect on education. The United States defines poverty using income alone, but poverty is more than just income. To address poverty's effect on education, all dimensions must be understood.

Solution



The Poverty Stoplight was created by Fundación Paraguaya to better define poverty in Paraguay. Although effective, little research has been done on multidimensional indicators in the U.S. We will determine if the Poverty Stoplight can better define poverty in Worcester.



Results



From our interviews, we concluded the Poverty Stoplight should be used in Worcester. Here's what influenced our conclusion:

"Having more complex data can help ... make the case for policy change"

"You can't give an apple to someone with no teeth"

"[The Poverty Stoplight] would allow people to identify challenges and focus on them"

"It's hard not to let the system beat the motivation out of you"

100% said:

- There's a need for the Poverty Stoplight in Worcester
- Poverty in Worcester is more than just income
- Poverty Stoplight is better than Poverty Line definition