

## How to Enable WAMP Server to be Accessible from Other Computers

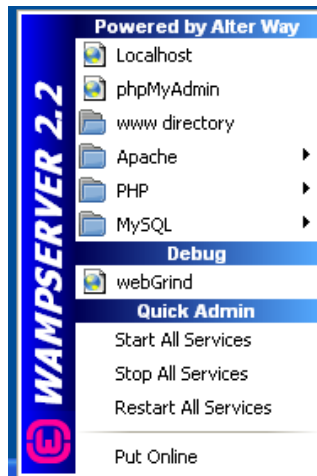
After the WAMP Server is installed on the computer, these instructions are to make the computer accessible from other computers to enter data from multiple computers.

**To enter in the data, the host computer must be turned on, and the WAMP Server must be online.**

1. On the taskbar there is an icon on the right that is the WAMP Sever icon. The icon is shown below. Click once on the icon to bring up the menu.



2. On the menu, click the option called "Put Online". This option allows the WAMP Server to be accessed by any computer in the Blue Hill network.

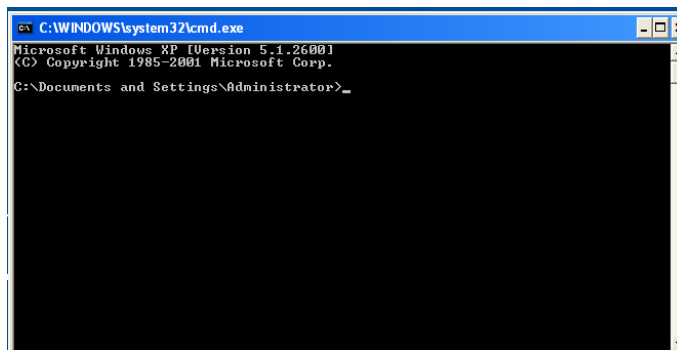
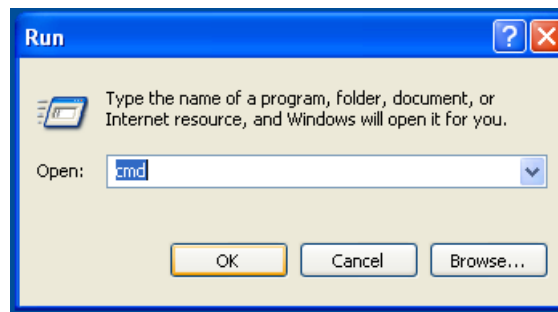


3. The next step is to determine the IP Address of the WAMP Server computer. This is done by going to the start menu and starting the command prompt. To do this in Windows XP, see part A. To do this in Windows 7/Vista, see part B.
  - a. Windows XP Starting Command Prompt
    - i. Click on the start button and click on Run.

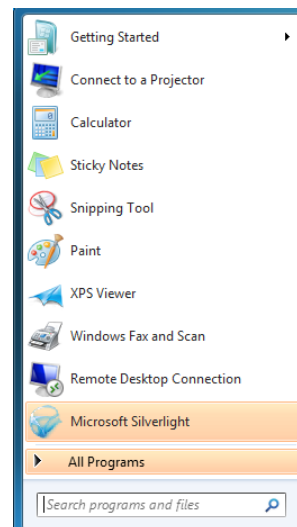


- ii. In the dialog box, type "cmd" without the quotations. This will start up the command prompt. Go to step 4.

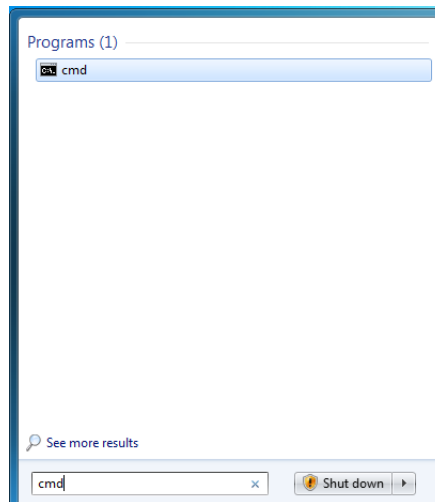
## How to Enable WAMP Server to be Accessible from Other Computers



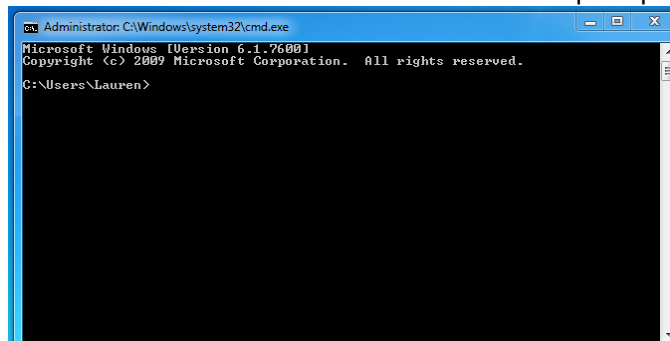
- b. Windows 7 Starting Command Prompt
  - i. Click on the start button and in the search programs and files type in "cmd" without the quotations.



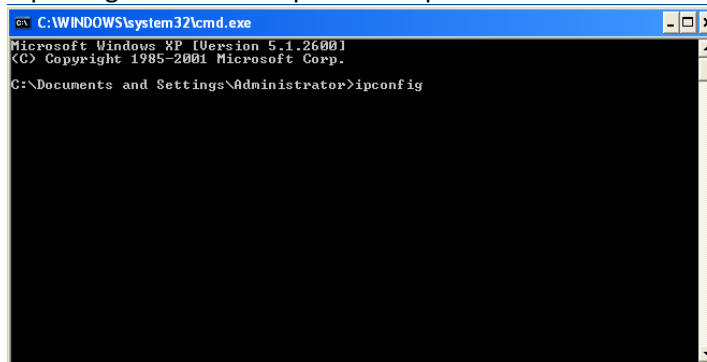
# How to Enable WAMP Server to be Accessible from Other Computers



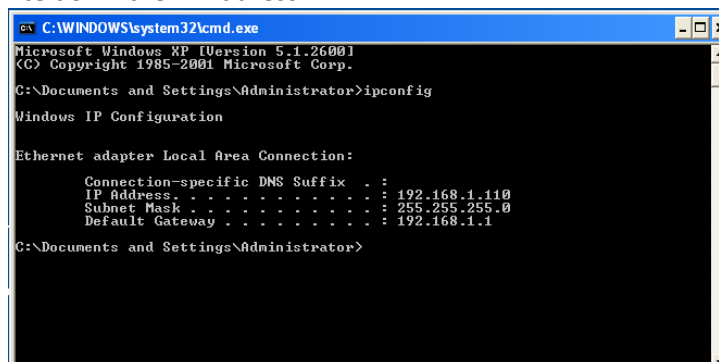
- ii. Click on the program called “cmd.exe”. This will start the command prompt. Go to step 4.



4. In the command box, type “ipconfig” without the quotes and press enter.



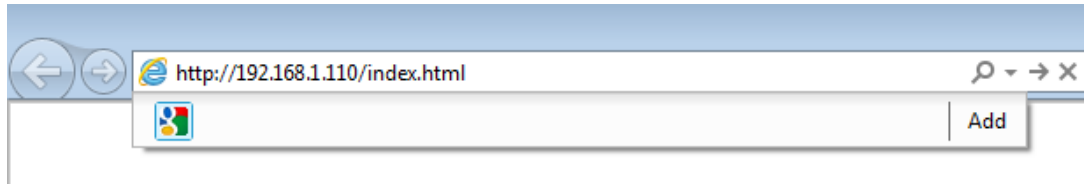
5. The output for this command will show up below the text. The information that is needed for this is the IP Address. Your IP Address will differ than the one in this picture. The IP Address is needed to access the server from other computers. Write down the IP Address.



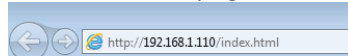
6. Next, go to another computer, such as a computer that will be used to enter in data, and open a web browser.

## How to Enable WAMP Server to be Accessible from Other Computers

7. Enter into the address bar: "http://xxx.xxx.x.xxx/index.html" and press enter. The x's in this website correspond to the IP Address found in Number 5.



8. This will bring the user to the entry forms. Bookmark this page for convenience.



### **B16 Entry Data:**

---

[Hourly Temperature Entry Form](#)  
[Hourly Precipitation Entry Form](#)  
[Hourly Sunshine Minutes Entry Form](#)  
[Hourly Wind Speed and Direction Entry Form](#)  
[Daily Sky Cover Entry Form](#)  
[Daily Lowest Visibility Entry Form](#)  
[Daily Relative Humidity Entry Form](#)